



Streatham Hill, SW2

£300,000

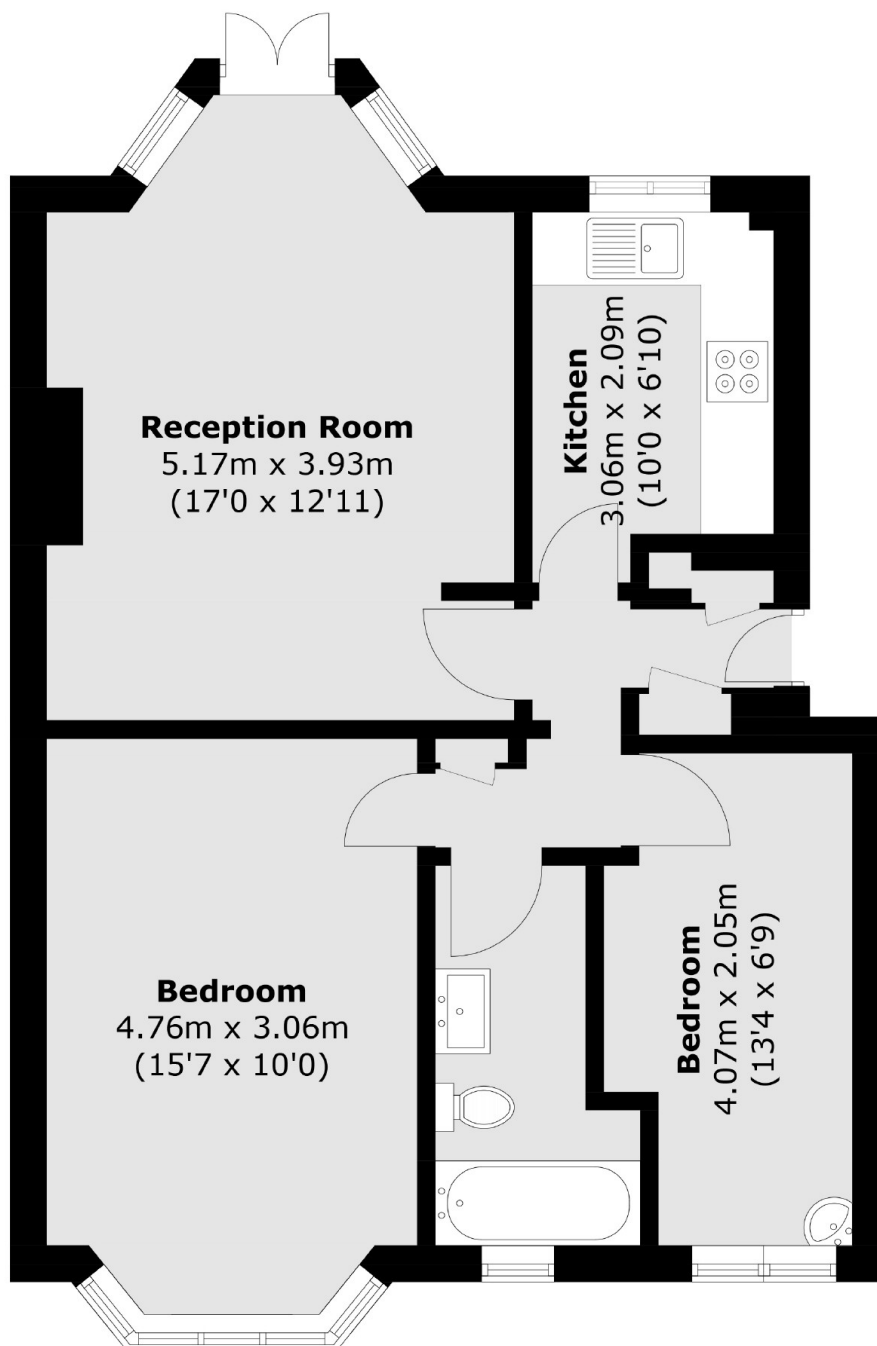
CASH BUYERS ONLY this bright two bedroom flat has a large living room, separate kitchen/diner, spacious bedrooms and in need of modernisation. This home is offered to the market with no onward chain and is surrounded by immaculate communal grounds.

Wavertree Court, is located just off of Wavertree Road set back from Streatham Hill. The property is extremely well located, close to Streatham Hill Station and is easily accessible for a number of bus routes.

Features

- Over 610 Sq Ft
- Two Bedrooms
- Communal Grounds
- Separate Kitchen
- Chain Free
- Bright Flat

Streatham Hill, London, SW2



Total area (approx.): 56.9 sq. m (612.5 sq. ft)