



## Streatham High Road, SW16

### £290,000

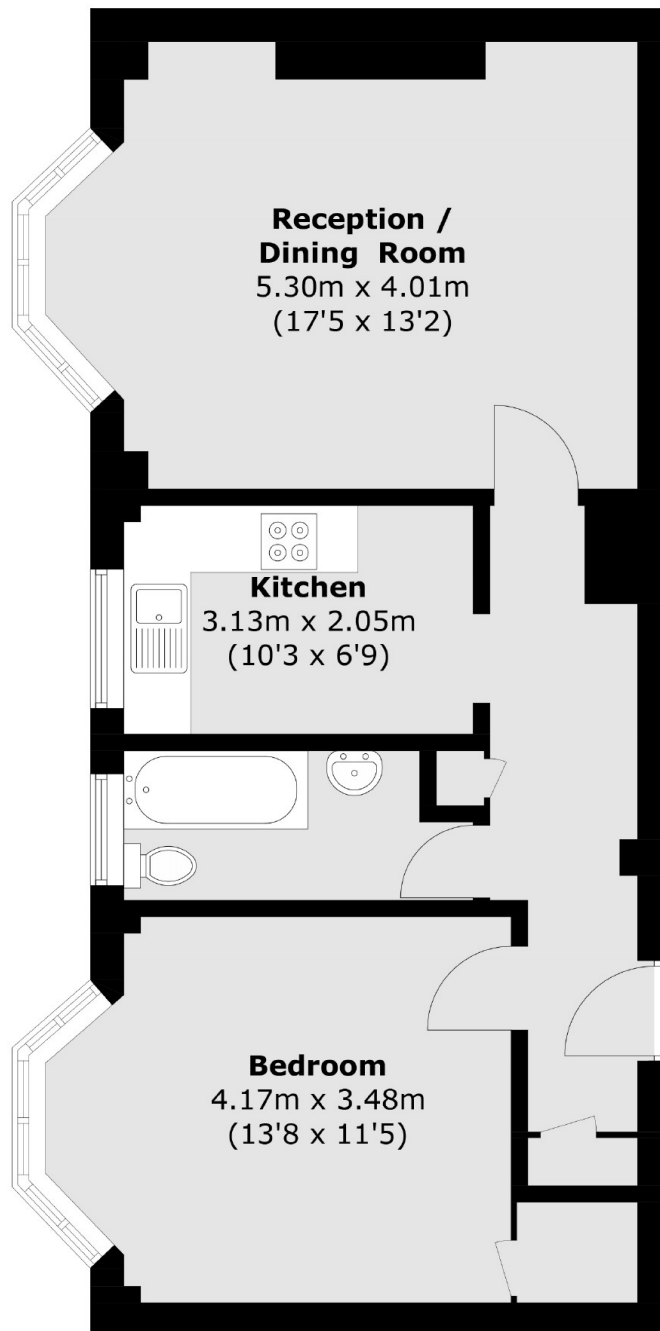
At just under 600sqft is this spacious one double bedroom apartment. Flooded with natural light, the front reception has space for a large sofa and dining table. There is also a separate kitchen, modern bathroom and big double bedroom. This home will also be sold with a newly extended lease.

Streathleigh Court is perfectly located for commuting, just moments away from Streatham Hill Station (towards Victoria via Clapham Junction) and an easy bus ride to Brixton tube. It has several recreational parks nearby and local shops, bars and restaurants all on the doorstep.

### Features

- One Double Bedroom
- Separate Kitchen
- Large Reception
- Great Location
- Close to Station

# Streatham High Road, London, SW16



Total area (approx.): 54.4 sq. m (585.5 sq. ft)

## Dexters

Streatham  
105 Streatham Hill  
London  
SW2 4UG  
Sales  
020 8674 7400

Energy Rating: B. We aim to make our particulars both accurate and reliable. However they are not guaranteed; nor do they form part of an offer or contract. If you require clarification on any points then please contact us, especially if you're traveling some distance to view. Please note that appliances and heating systems have not been tested and therefore no warranties can be given as to their good working order.

 **RICS** | Regulated  
Estate Agent  
and Letting Agent

[dexters.co.uk](https://www.dexters.co.uk)