



Park Avenue Mews, CR4

£315,000

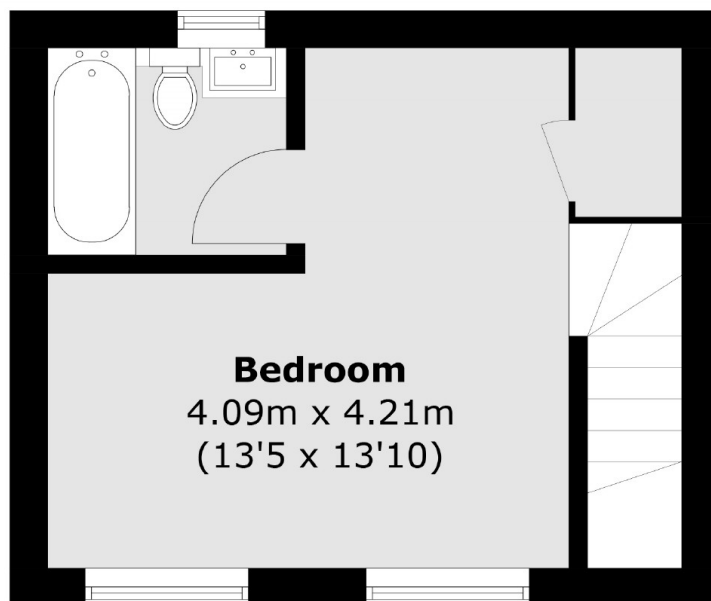
Rare to the area is this one double bedroom, freehold house with private outside terrace. Downstairs the open plan living area is modern and upstairs the bedroom is spacious and has a modern en-suite.

Park Avenue Mews is a small collection of houses between Caithness Road and Park Avenue. Located within close proximity of Tooting rail and Tooting Broadway stations, this property offers links into the city and is walking distance to local amenities.

Features

- One Bedroom
- Freehold House
- Chain Free
- Private Terrace
- Immaculate Condition
- Open Plan

Park Avenue Mews, Mitcham, CR4



First Floor



Ground Floor

Total area (approx.): 42.0 sq. m (452.1 sq. ft)