



## Streatham Hill, SW2

£325,000

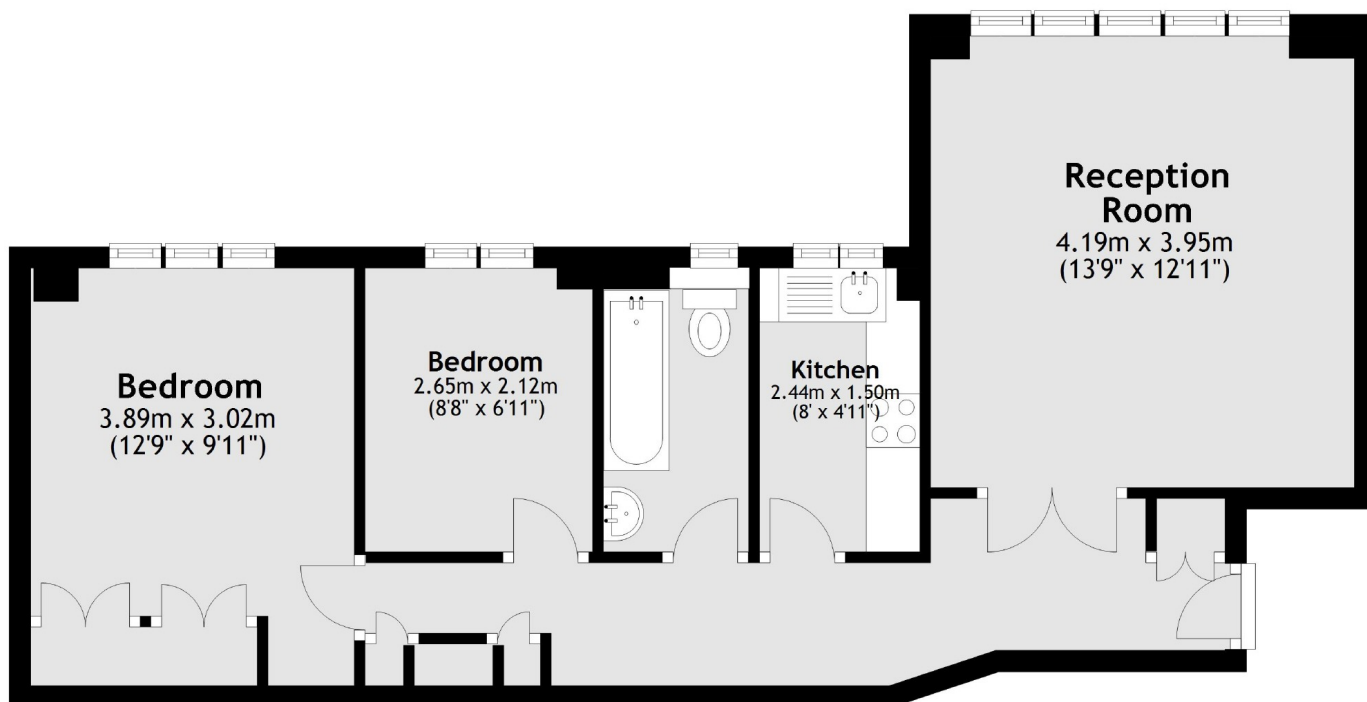
This ground floor apartment is situated in a Grade II listed, Art Deco building on the top of Streatham Hill. It benefits from a large entertainment space and well maintained communal gardens. The property has two bedrooms as well as a modern bathroom and is offered with no onward chain.

Pullman Court is located moments away from Streatham High Road comprising of local amenities with a variety shops, restaurants, cafés and leisure centres. The building has direct links into London Bridge and Victoria via stations nearby and buses provide great access to Brixton.

### Features

- Two Bedrooms
- Art Deco Building
- Quiet Location
- Communal Gardens
- Separate Kitchen
- Ground Floor Apartment

# Streatham Hill, London, SW2



Total area: approx. 53.4 sq. metres (575.3 sq. feet)