



## Streatham Place, SW2

### £290,000

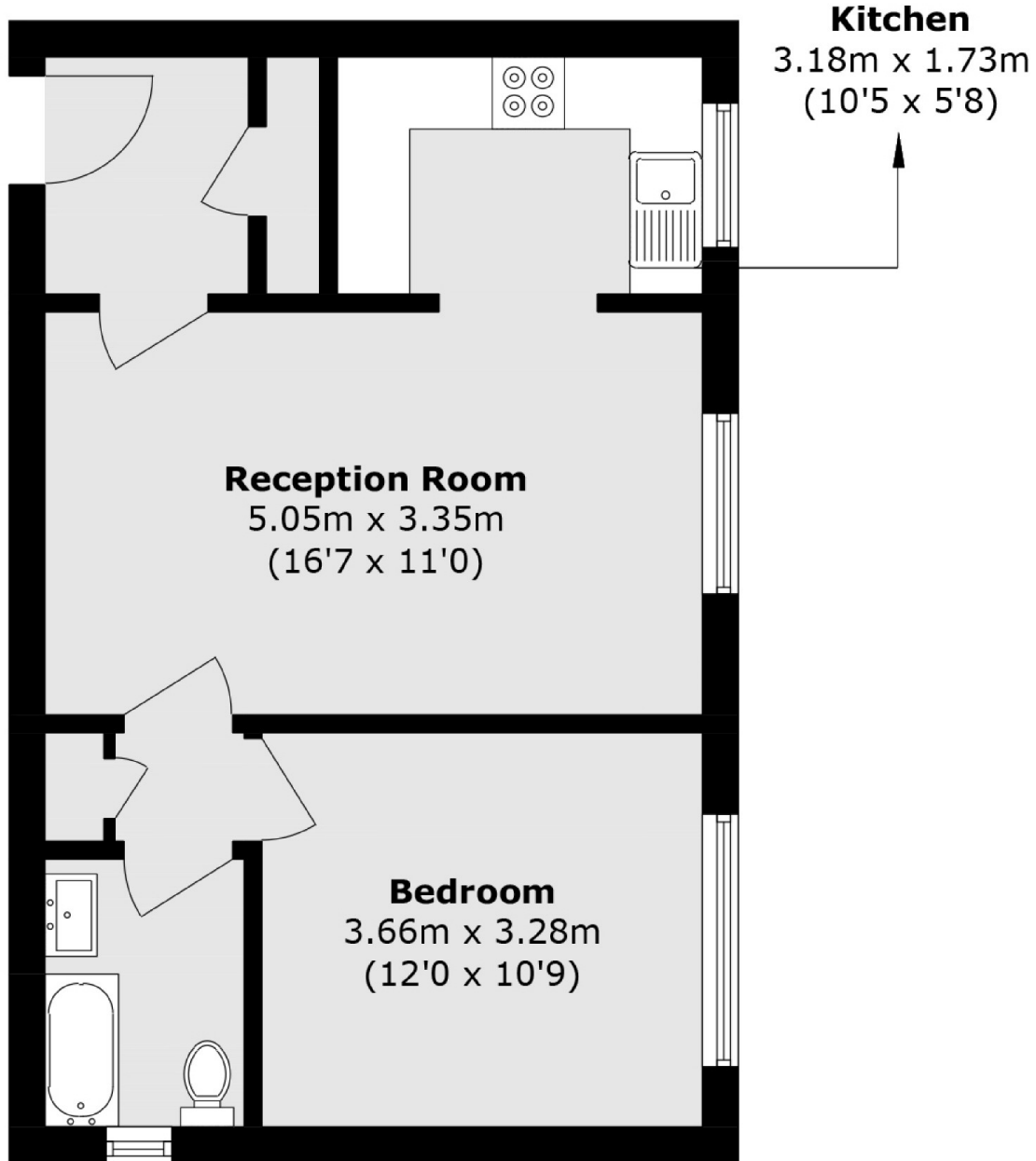
Located on the ground floor of this purpose built block, is a modern one bedroom apartment. In good condition throughout this home has a large reception and adjoining kitchen as well as a spacious bedroom and bathroom. This property has the added benefit of a car parking space and communal grounds.

Beaumont Court can be found at the junction of Streatham Hill and Brixton Hill where you can find a vast array of shops, pubs and restaurants. There are excellent links into London using the mainline services from Streatham Hill or the Victoria line at Brixton.

### Features

- Great Condition
- Modern Flat
- Ground Floor
- Parking Space
- Communal Grounds
- Long Lease

# Streatham Place, London, SW2



## Dexters

Streatham  
105 Streatham Hill  
London  
SW2 4UG  
Sales  
020 8674 7400

Energy Rating: C. We aim to make our particulars both accurate and reliable. However they are not guaranteed; nor do they form part of an offer or contract. If you require clarification on any points then please contact us, especially if you're traveling some distance to view. Please note that appliances and heating systems have not been tested and therefore no warranties can be given as to their good working order.

 **RICS** | Regulated  
Estate Agent  
and Letting Agent

[dexters.co.uk](https://www.dexters.co.uk)