



Madeira Road, SW16

£485,000

This ground floor, two double bedroom property is not to be missed. The high ceilings, large windows and utility room are just some of the reasons why this property is so appealing to any buyer looking for a charming home. The property has a stylish open plan kitchen/living/dining space with views over the communal gardens as well as a modern bathroom with four piece suite.

This property has the added bonus of first come first serve parking, a share in the freehold and large communal gardens with veggie patch and pizza oven.

Features

- Two Double Bedrooms
- Large family Bathroom
- Communal Gardens
- High Ceilings
- Great Location
- Plenty of Storage

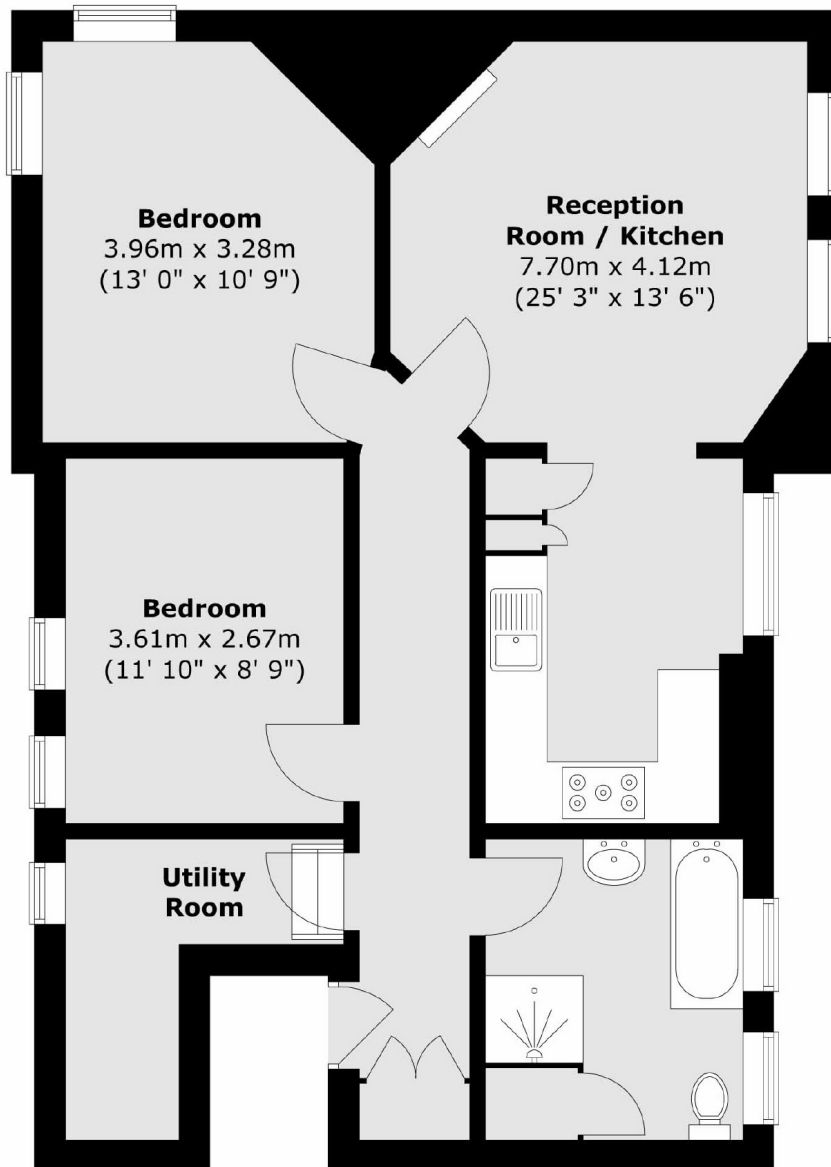


Madeira Road, SW16



Madeira Road, London, SW16

Ground Floor



Total area (approx.) : 72.7 sq. m (782 sq. ft)