

Streatham High Road, SW16

£335,000

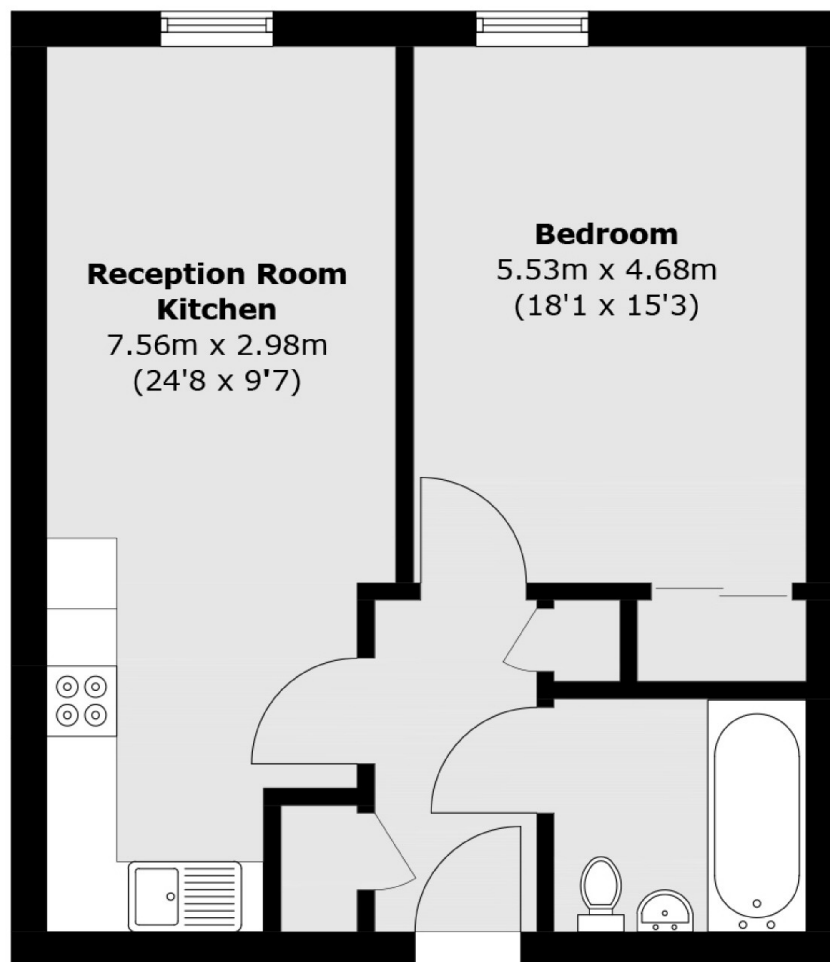
A one double bedroom property filled with natural light and is the perfect first time buy or investment property. The open-plan living accommodation has a modern fitted kitchen and space for both lounging and dining as well as fitted shutters. The large bedroom has space for both a fitted wardrobe and freestanding, whilst the handy utility cupboard in the hallway creates extra storage. The development benefits from a communal resident's courtyard as well as a 24 hour security and concierge.

Derry Court is within walking distance to Streatham Station, providing direct access into the City via Thameslink. Streatham Common Station is also nearby and provides access to London Bridge and Victoria via Southern Railway. There are many local amenities including supermarkets, gym and leisure centre as well as the open space of Streatham Common. Streatham High Road benefits from a wide variety of restaurants and shops.

Features

- One Double Bedroom
- Open-Plan
- Modern Property
- Close to Station
- Fitted Wardrobe
- Communal Courtyard

Streatham High Road, London, SW16



Total area (approx.): 48.9 sq. m (526.3 sq. ft)