



Drewstead Road, SW16

£350,000

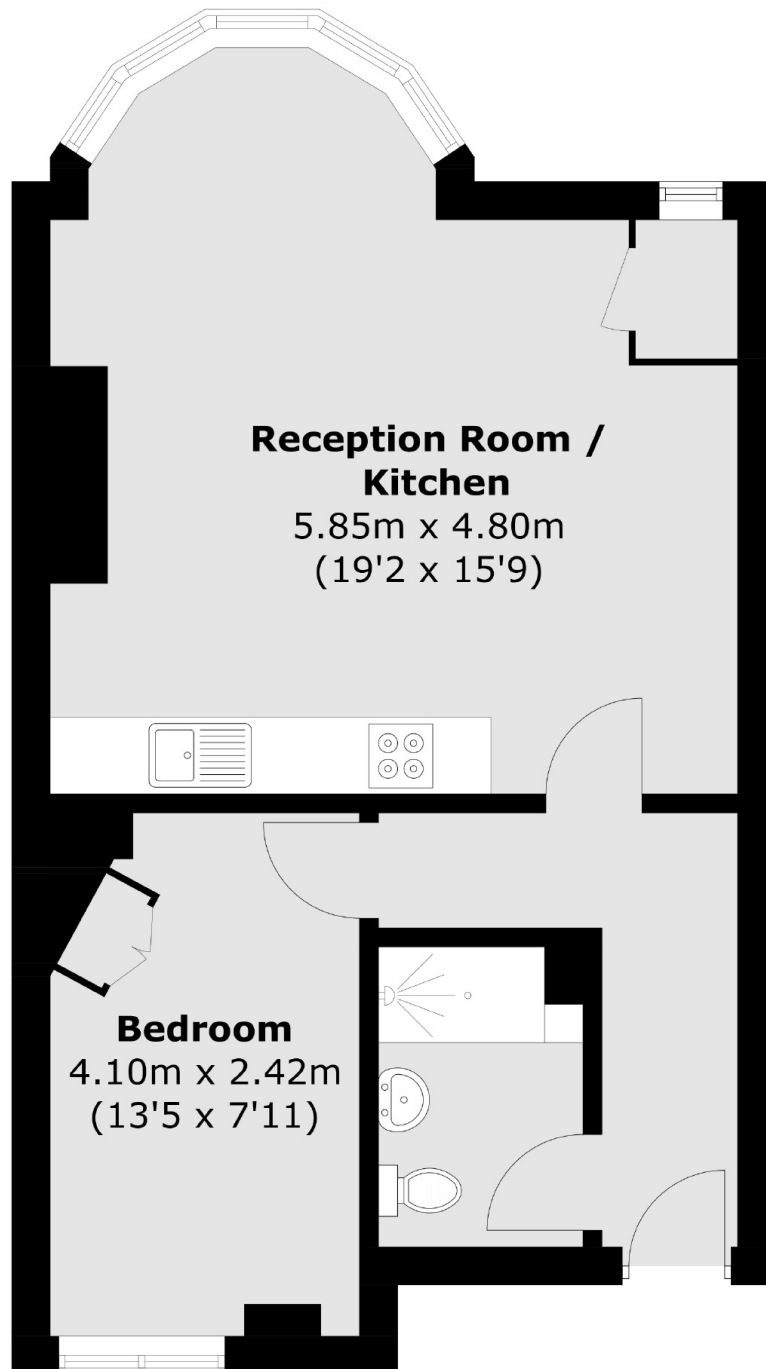
At over 510sqft is this one double bedroom, period property located close to the station. In good condition throughout this home is ready to move into and benefits from a large open plan kitchen/living room.

Drewstead Road is a very desirable tree-lined street perfectly situated for everything Streatham has to offer. With Tooting Common located at the end of the road it also provides easy access to rail links from Streatham Hill mainline station and frequent bus routes to Brixton town centre.

Features

- One Double Bedroom
- Great Location
- Convenient Location
- Close to Station
- Period Conversion
- Over 510 SqFt

Drewstead Road, London, SW16



Total area (approx.): 48.1 sq. m (517.7 sq. ft)