



**Westcote Road, SW16**

**£760,000**

**Dexters**



## Westcote Road, SW16

A freehold, three double bedroom home in immaculate condition. Flooded with natural light this property has an open-plan living accommodation, with large island, space for a dining table and sliding doors onto the private terrace.

On the ground floor, one of the bedrooms has direct access onto a further courtyard garden, this room also has dual use and could be used as a study or snug and has use of the modern family bathroom. Upstairs there are two further bedrooms with the primary bedroom containing a dressing area with fitted wardrobes, high ceilings and en-suite. The third bedroom is also a spacious double bedroom and has access to a further bathroom. This home also has solar panels, alarm system and still under the building warranty.

Located within close proximity to the vibrant town centres of Tooting and Streatham, Makers Row offers access to a diverse range of retail and leisure facilities as well as good transport links in to central London. Streatham Common Station is within walking distance and offers links into London Victoria Via Clapham Junction.

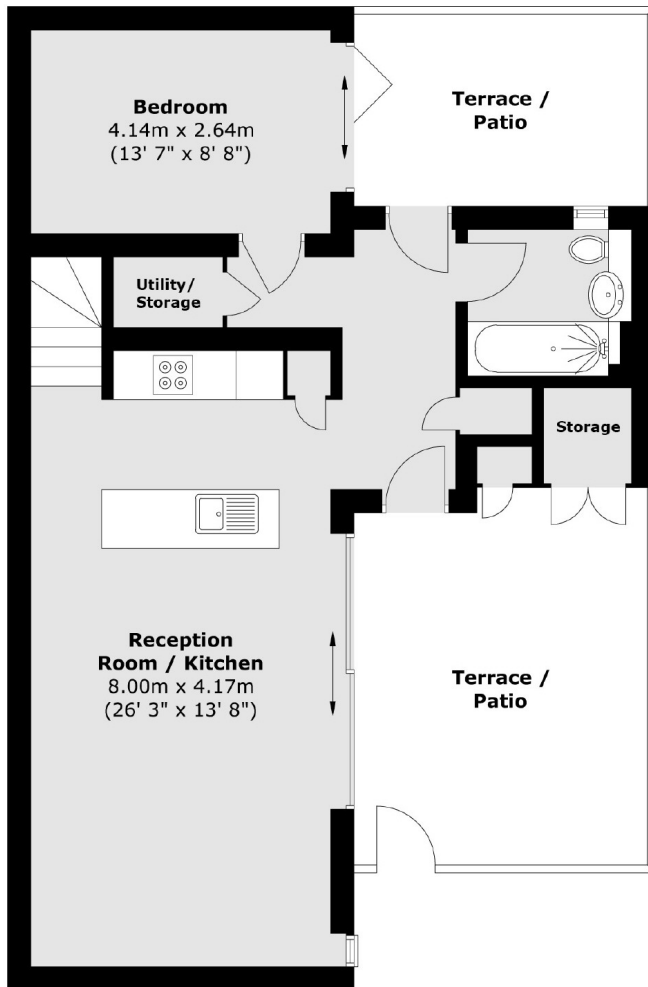
### Features

- Three Double Bedrooms
- Immaculate Condition
- Two Terraces
- Private Gated Parking
- Three Bathrooms
- Close to Station

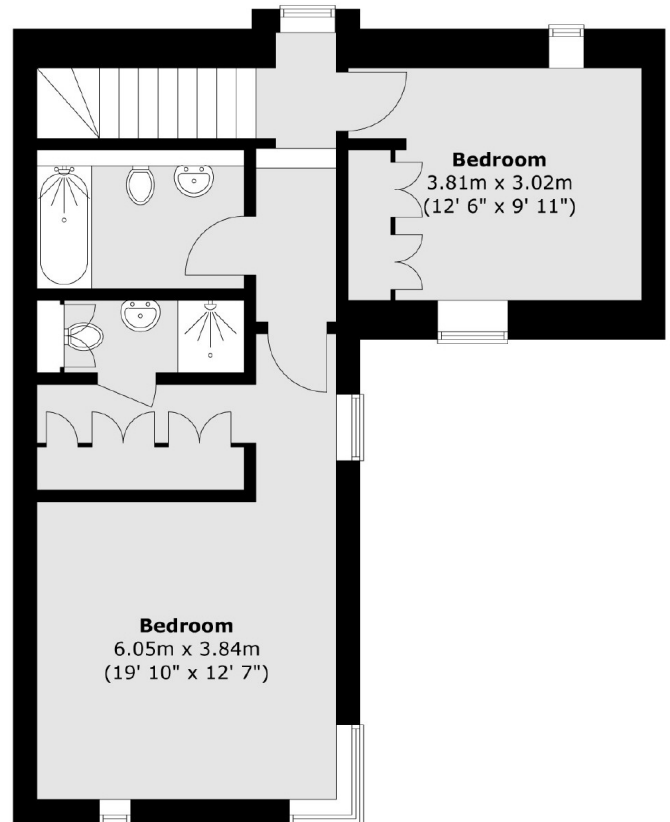


# Westcote Road, London, SW16

**Ground Floor**



**First Floor**



Total area (approx.) : 108.7 sq. m (1170 sq. ft)  
Total store area (approx.) : 1.8 sq. m (19 sq. ft)  
Total terrace / patio area (approx.) : 27.6 sq. m (297 sq. ft)