



Gleneagle Road, SW16

£350,000

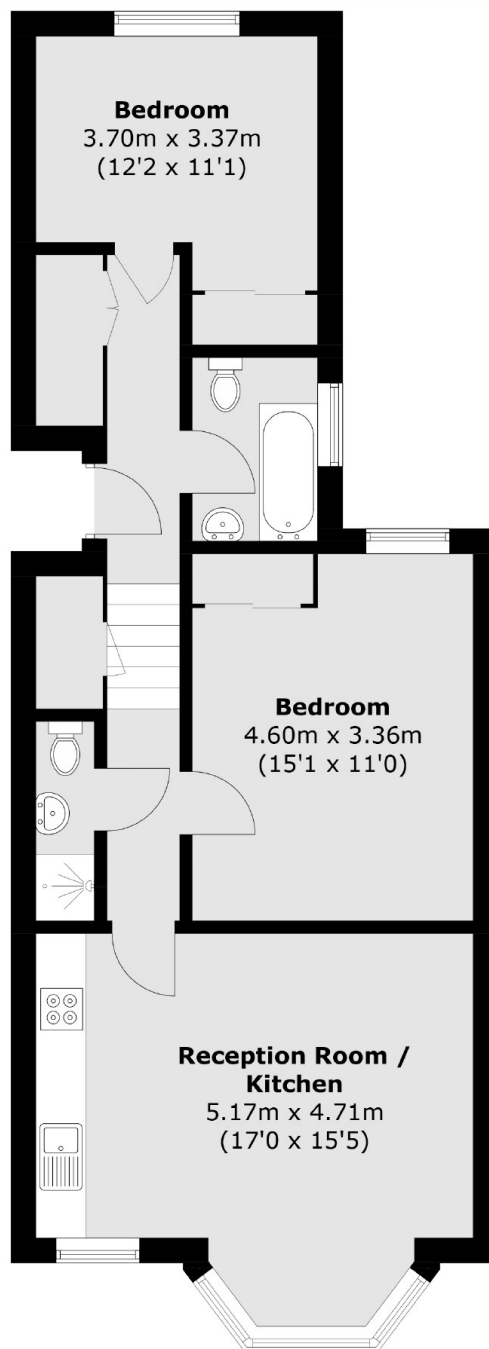
A split level period conversion with an open plan reception/kitchen, two double bedrooms and two bathrooms that has been recently re decorated and is offered to the market with no onward chain.

Gleneagle Road is perfectly placed for Streatham Mainline stations providing direct links into both The City and the West End with Streatham High Road providing an eclectic mix of independent and High Street shops, bars and restaurants.

Features

- 700 sq ft (approx)
- Open Plan Reception
- Two Double Bedrooms
- Two Bathrooms
- Re Decorated
- No Chain

Gleneagle Road, London, SW16



First Floor

Total area (approx.): 64.5 sq. m (694.3 sq. ft)