



Ambleside Avenue, SW16

£450,000

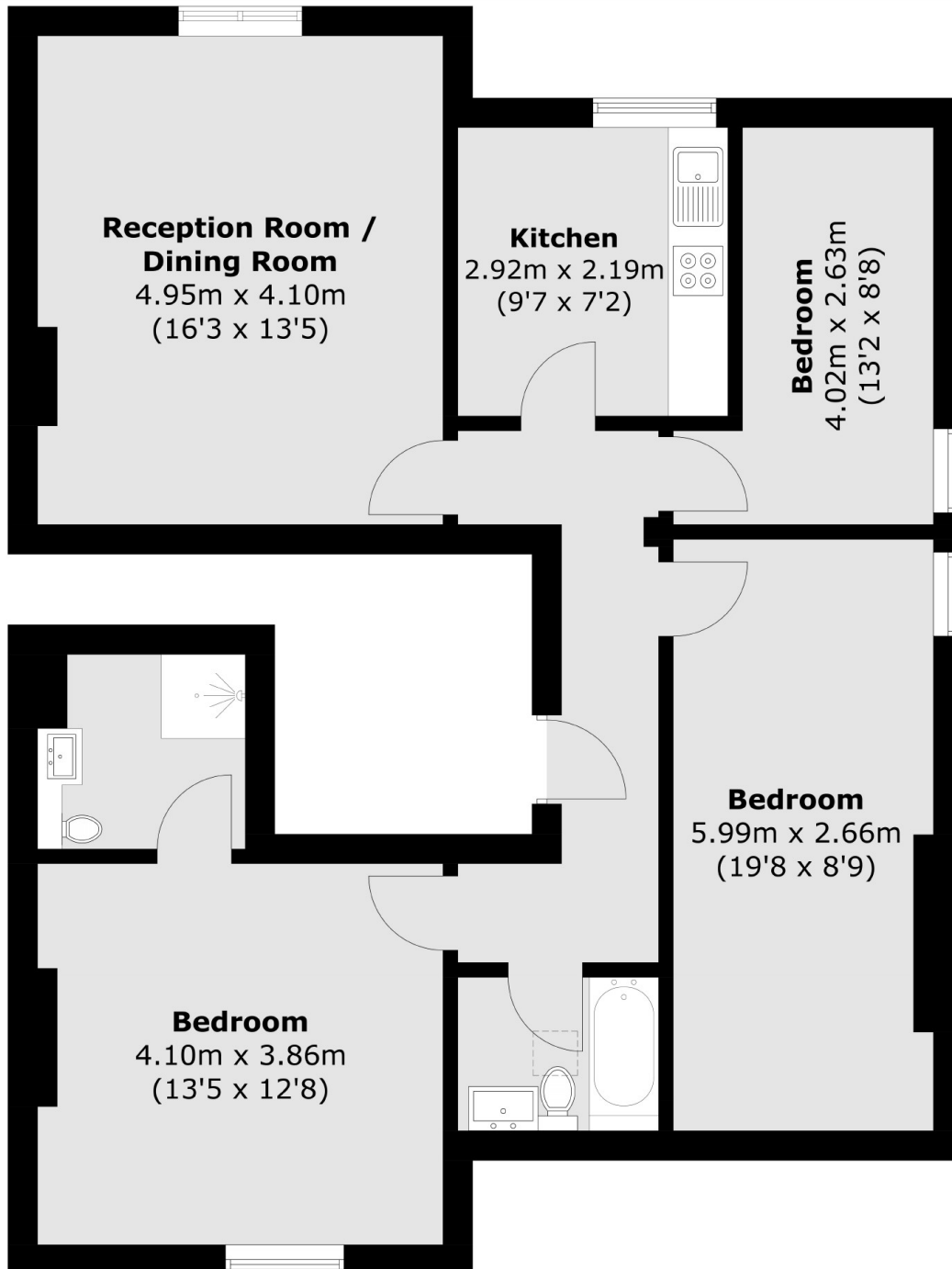
At over 930sqft is this three bedroom lateral flat with no onward chain. This home is in good condition throughout and has a separate kitchen as well as a large reception with dining area. All three double bedrooms are serviced by two modern bathrooms with one being en-suite. This property is also being sold with no onward chain and an allocated parking space.

Ambleside Avenue is situated in the highly sought-after Streatham Park area within walking distance to Tooting Bec Common. Streatham mainline station is situated close by, which has quick links to the City. The shopping facilities as well as a wide choice of bars and restaurants are just a short walk away

Features

- Three Bedrooms
- Chain Free
- Close to Station
- Two Bathrooms
- Good Condition
- Separate Kitchen

Ambleside Avenue, London, SW16



Total area (approx.): 87.0 sq. m (936.5 sq. ft)