



Tierney Road, SW2

£345,000

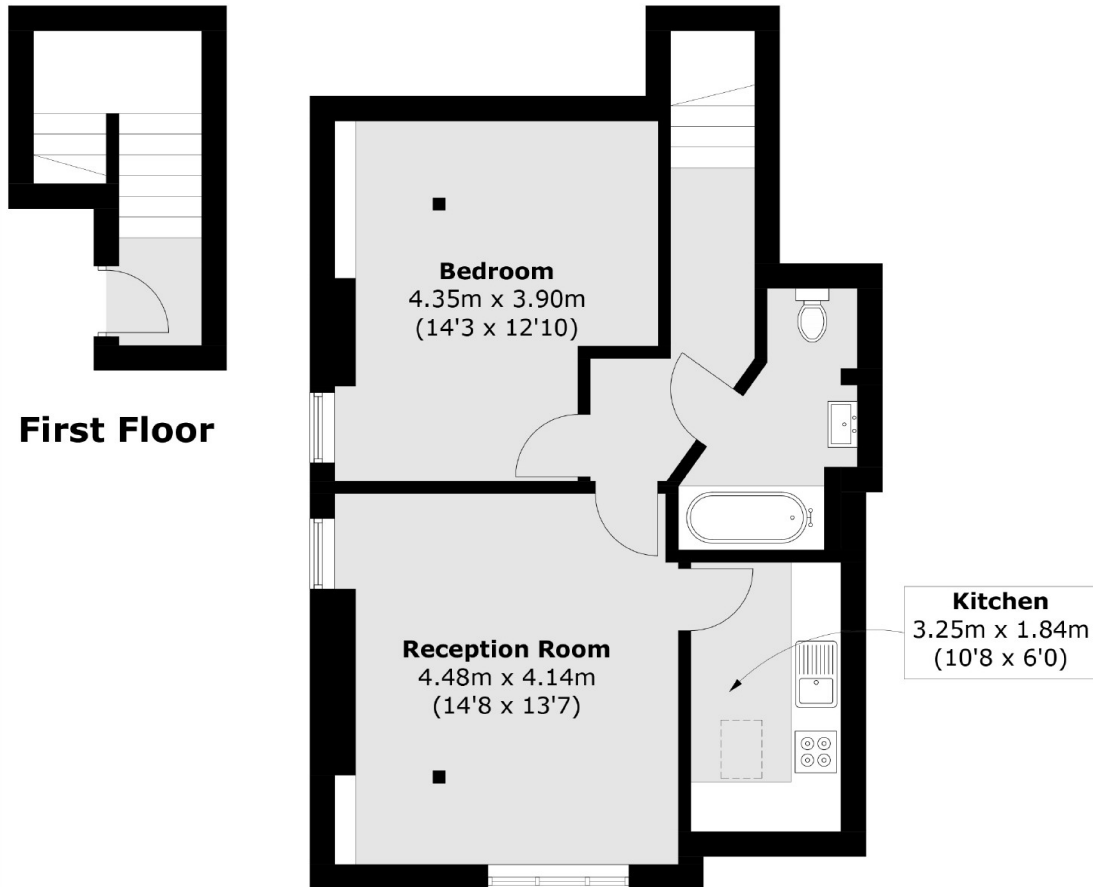
A top floor, split level, one double bedroom period conversion. This home is the perfect step onto the property ladder, with spacious bedroom, separate kitchen and large communal garden, there is also the added benefit of a share in the freehold.

Ideally situated for the amenities of Streatham Hill including shops, restaurants and bars, the property is also within easy reach of Streatham Hill station providing links to London Victoria via Clapham Junction. Tierney Road is also ideally located between Balham and Brixton tube stations with excellent bus routes to both.

Features

- One Double Bedroom
- Communal Garden
- Period Conversion
- Close to Station
- Separate Kitchen
- Share of Freehold

Tierney Road, London, SW2



First Floor

Total area (approx.): 59.2 sq. m (637.2 sq. ft)