



Streatham Hill, SW2

£395,000

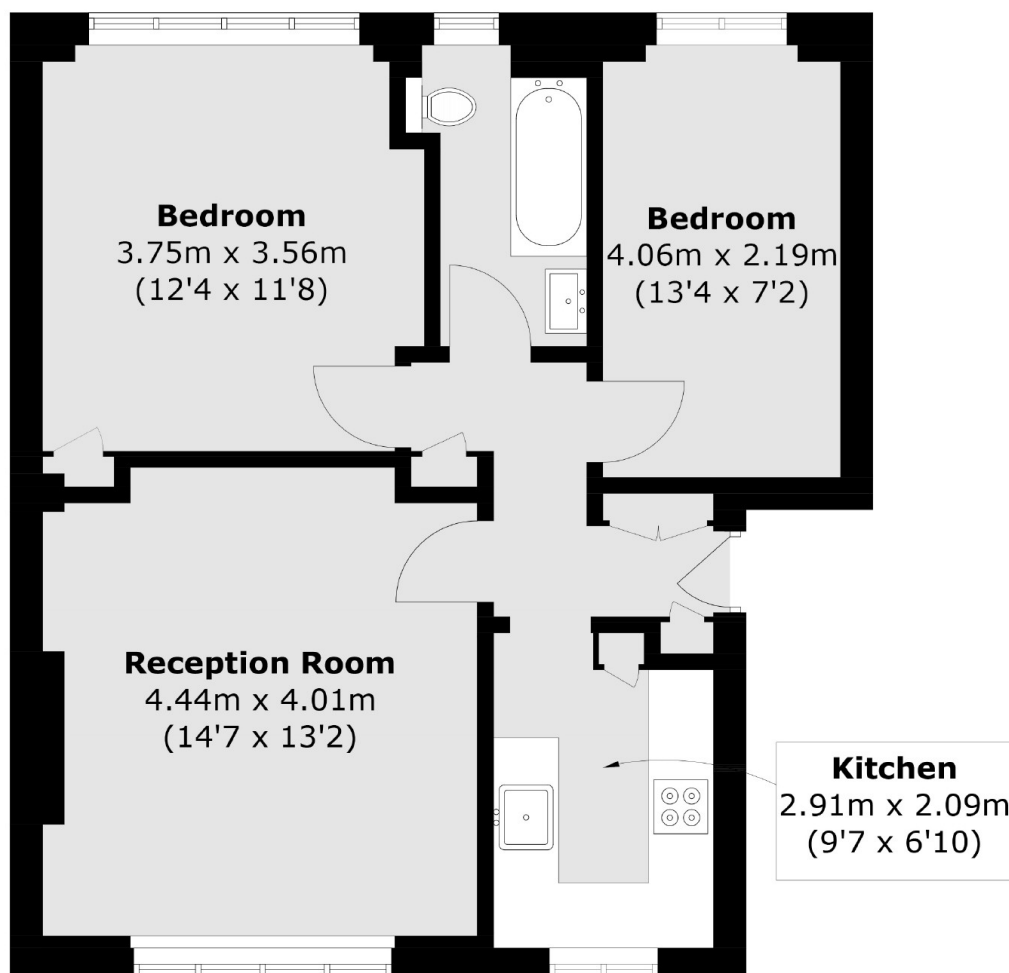
Located on the top floor of this art deco development is this charming two double bedroom property. In excellent condition this home has a modern kitchen and bathroom as well as bright reception room. This property has communal grounds that have been maintained to a high standard and feature two fountains.

Wavertree Court, is located just off of Wavertree Road set back from Streatham Hill. The property is extremely well located, close to Streatham Hill Station and is easily accessible for a number of bus routes.

Features

- Two Double Bedrooms
- Great Location
- Modern Kitchen
- Communal Garden
- Top Floor
- Excellent Condition

Streatham Hill, London, SW2



Total area (approx.): 56.4 sq. m (607.0 sq. ft)