

Beulah Hill, SE19

£295,000

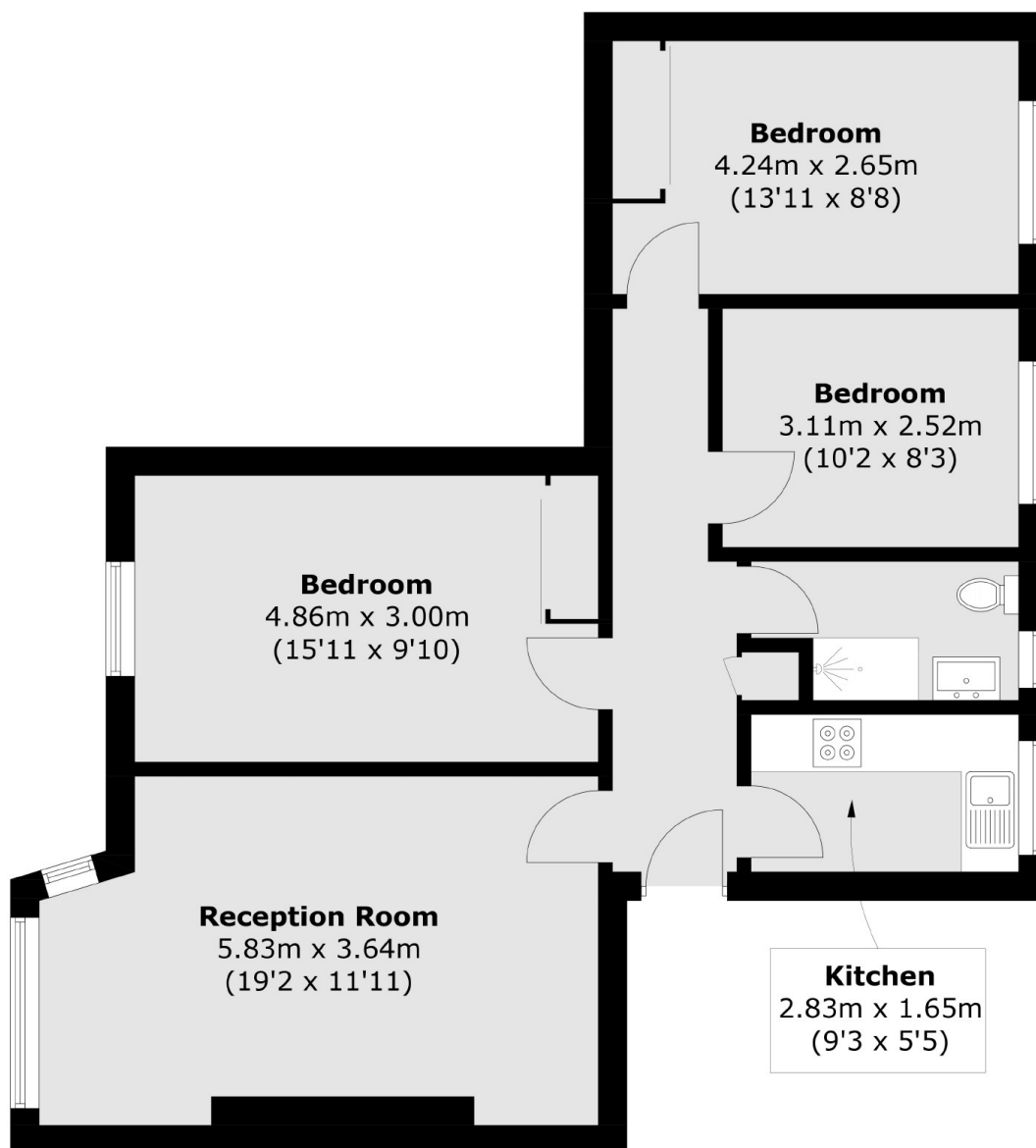
At over 780sqft is this three bedroom lateral flat. Flooded with natural light throughout this home has a large reception room, separate kitchen and even the added bonus of a garage.

Beulah Hill is situated between Crystal Palace and Streatham Common and is located between the green spaces of Norwood Grove and Upper Norwood Recreation Ground.

Features

- Three Bedrooms
- Over 780sqft
- Large Reception
- Separate Kitchen
- Spacious Flat
- Garage

Beulah Hill, London, SE19



Total area (approx.): 73.2 sq. m (787.9 sq. ft)