



Palace Road, SW2

£990,000

Dexters



Palace Road, SW2

A modern 1220 sq ft three bedroom future proofed semi detached home set within a small gated development off Brixton Hill.

The property can be accessed via security gates and is one of three properties set within this really very pretty and secluded Mews. On the ground floor there are three extremely well proportioned double bedrooms, a family shower room and also a four piece en suite in the principal bedroom.

The first floor is taken up by an impressive 30ft open plan reception with a fitted modern kitchen and access onto a balcony.

Outside there is a private garden which wraps around the entire property and there is also off street parking for one car.

Further features include a sedum roofs, air-source heat pump, triple-glazed windows, underfloor heating throughout, wonderfully designed bathrooms with walk-in showers with frameless glass screens, black sanitary ware and concrete sinks by Smith and Goat.

Palace Road is a pretty tree lined residential street ideally located for easy access into either Brixton or Streatham Town Centres.

Features

Gated Mews Development

30ft Open Plan Reception

Three Double Bedrooms

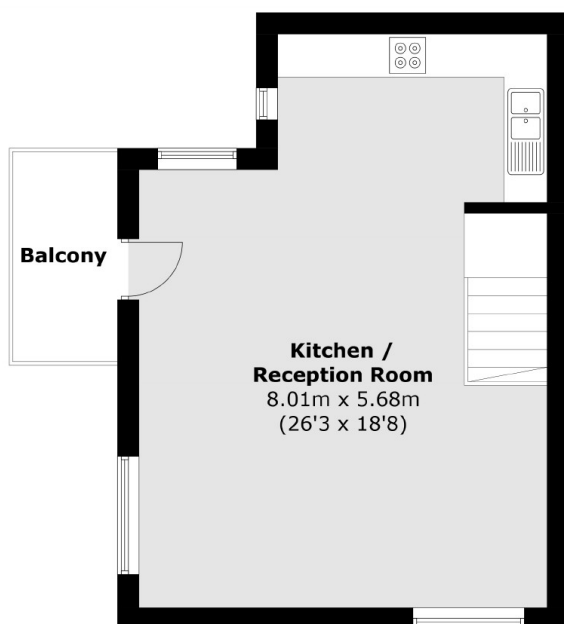
Two Bathrooms

Wrap Around Garden & Balcony

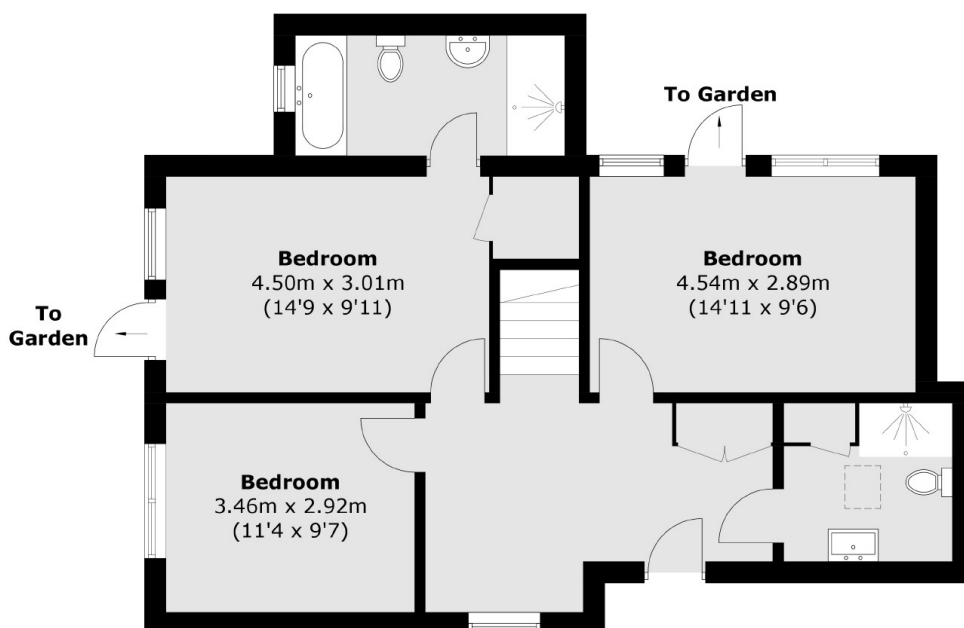
Off Street Parking



Palace Road, London, SW2



First Floor



Ground Floor

Total area (approx.): 110.8 sq. m (1,192.6 sq. ft)

Balcony (approx.): 4.3 sq. m (46.3 sq. ft)