



## Gaumont Place, SW2

£400,000

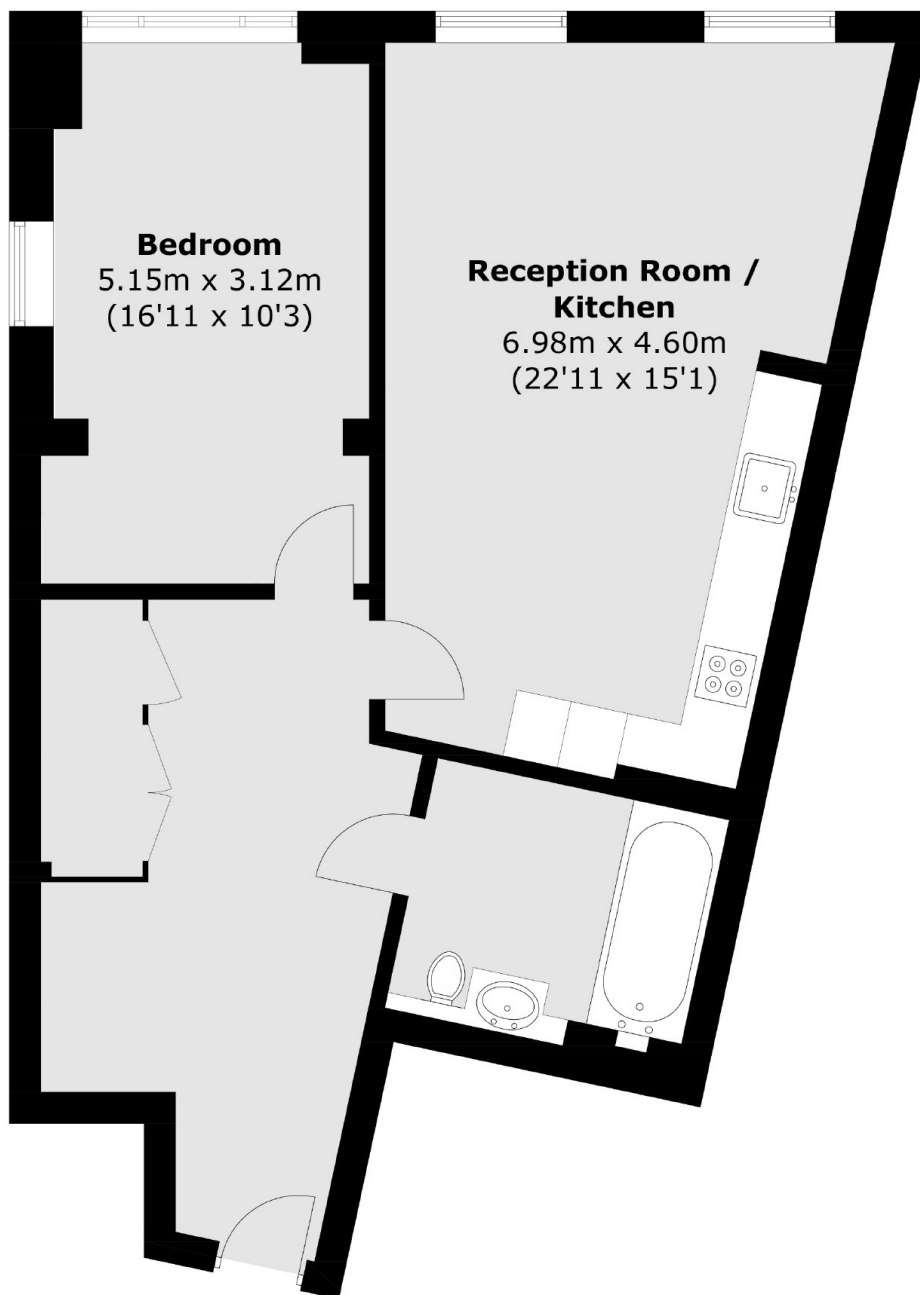
Offered to the market with no onward chain is this spacious and excellently maintained, one double bedroom apartment. With a long lease, concierge, gym and communal gardens this turn key property is perfect for a first time purchaser, those looking for a modern and spacious apartment, or looking to downsize. The large hallway provides ample dimensions which could act as a perfect work from home space, with great additional storage. Both the open plan living room and bedroom are bright and spacious with views of the roof tops over Streatham Hill.

Gaumont Place is a popular development in the perfect position to enjoy everything Streatham Hill has to offer. With good accessibility, Streatham Hill station is around the corner providing excellent rail links to London Victoria via Clapham Junction, or Brixton tube via a short bus ride from outside the development

### Features

- Large and bright flat
- Excellent condition
- Open-plan
- Modern development
- Communal gardens
- Concierge & gym

# Gaumont Place, London, SW2



Total area (approx.): 70.7 sq. m (761.0 sq. ft)

## Dexters

Streatham  
105 Streatham Hill  
London  
SW2 4UG  
Sales  
020 8674 7400

Energy Rating: B. We aim to make our particulars both accurate and reliable. However they are not guaranteed; nor do they form part of an offer or contract. If you require clarification on any points then please contact us, especially if you're traveling some distance to view. Please note that appliances and heating systems have not been tested and therefore no warranties can be given as to their good working order.

 **RICS** | Regulated  
Estate Agent  
and Letting Agent

[dexters.co.uk](https://www.dexters.co.uk)