



## Salford Road, SW2

£625,000

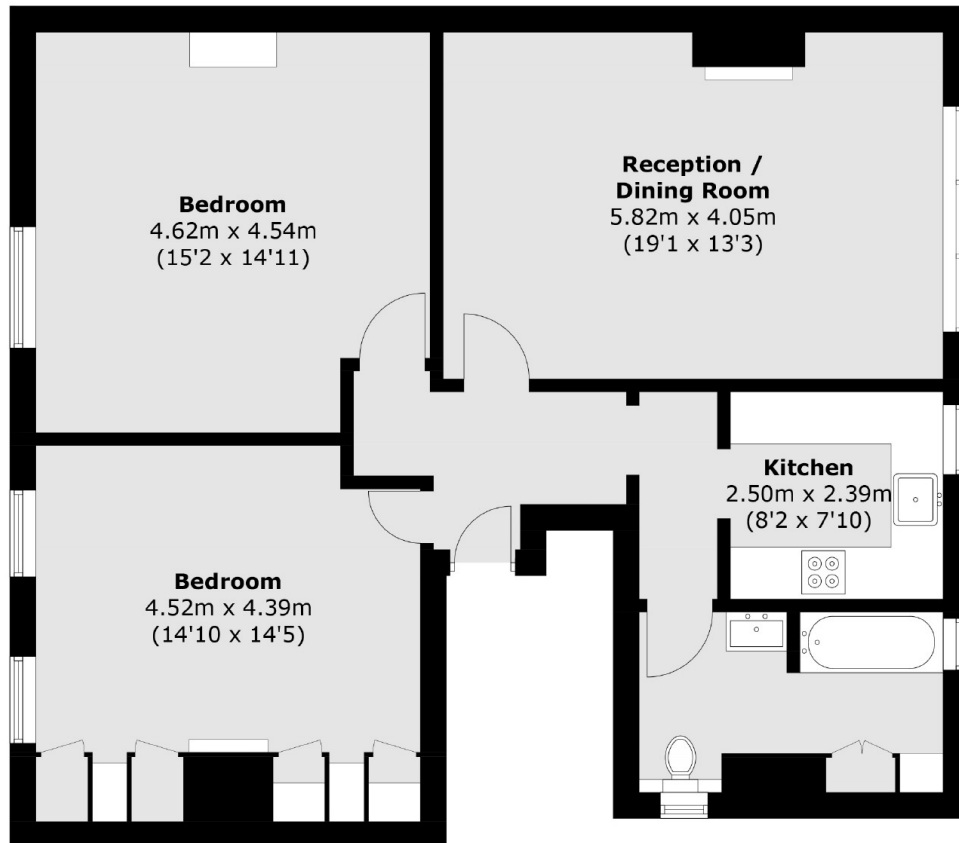
This two double bedroom period conversion is beautifully presented throughout. The property has a large bright living room, separate kitchen and large bathroom as well as a private garden. It is over 920 Sq Ft and situated on a quiet residential road.

Positioned on a very quiet and highly desirable road, the property sits between Balham and Streatham Hill offering a wealth of restaurants, shops, and supermarkets. Streatham Hill is close by with access into Victoria, whilst Balham Tube has access via the Northern Line. Excellent bus routes are available into Brixton. Tooting Common is a short walk away, with a vast open green space housing the Lido.

### Features

- Convenient Location
- Private Garden
- Two Double Bedrooms
- Excellent Condition
- Separate Kitchen
- Over 920 Sq Ft

# Salford Road, London, SW2



Total area (approx.): 85.5 sq. m (920.3 sq. ft)