



Farm Avenue, SW16

£2,300 Per calendar month

This three bedroom maisonette offers two great size double bedrooms and one slightly smaller room that would be ideal for a study. Split over two levels this property comprises a modern kitchen and en-suit from the main bedroom.

Farm Avenue is well placed for the wide range of independent coffee shops, bars, supermarkets and health clubs Streatham has to offer. Streatham Hill and Streatham train stations are both easily accessible too.

Features

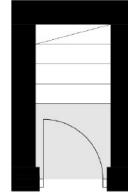
- Three Bedroom Maisonette
- Two Double Bedrooms
- Additional Study
- Two Bathrooms
- Wooden Floors
- Prime Location



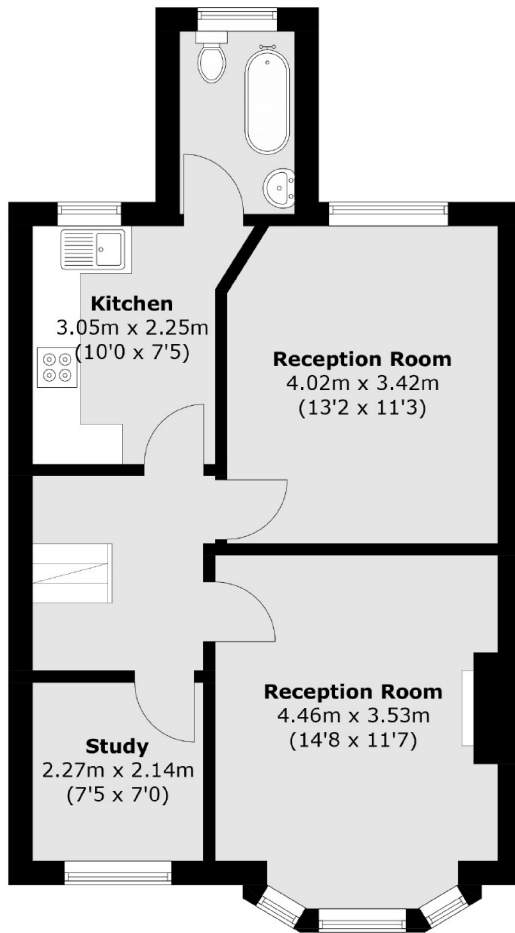
Farm Avenue, SW16



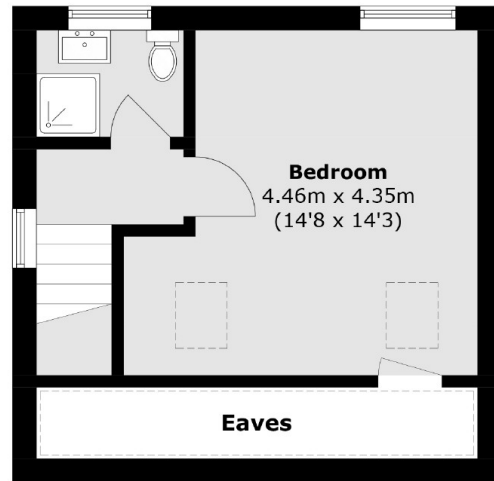
Farm Avenue,
London, SW16



Ground Floor



First Floor



Second Floor

Total area (approx.): 77.5 sq. m (834.2 sq. ft)
(Excluding Eaves)