



Thirlmere Road, SW16

£500,000

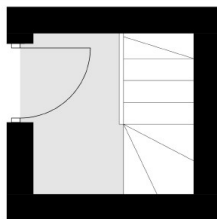
OFFERS OVER Located on the top floor of this period property, is a two double bedroom home in immaculate condition. With a large bright reception, leading onto the modern kitchen this home has ample living space. The two double bedrooms are spacious whilst the hallway contains an internal staircase and an area that could be used as a study area.

Thirlmere Road provides good access to both Tooting and Streatham town centres offering an excellent choice of rail, tube and bus links to the city along with an eclectic mix of independent and High Street shops, bars and restaurants. Tooting Bec Common is at the end of the road and is ideal for walks and access to the Lido.

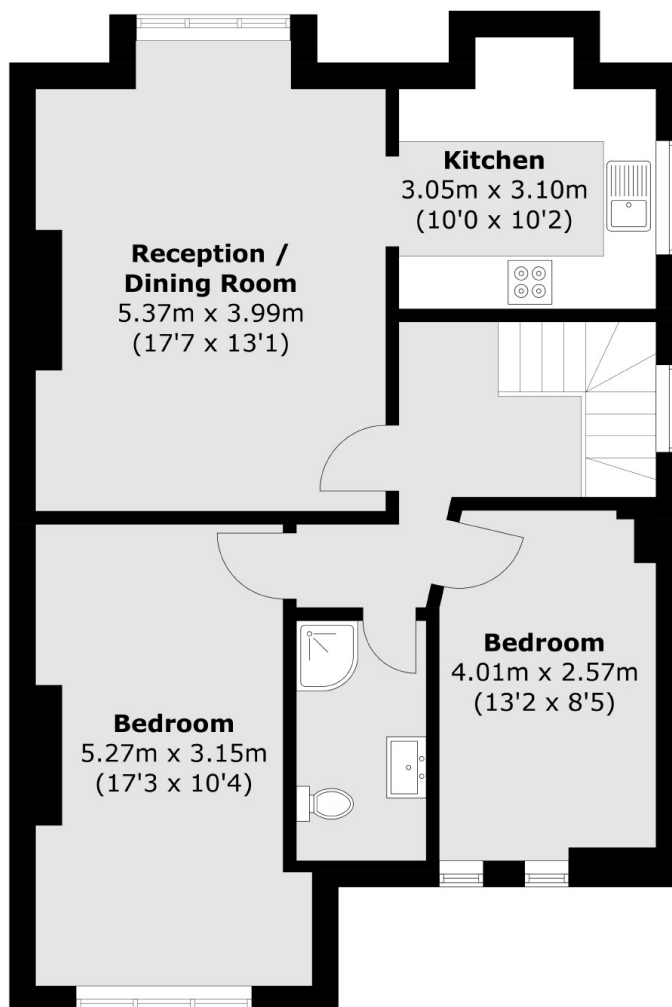
Features

- Two Double Bedrooms
- Top Floor
- Large Flat
- Close to Common
- Share of Freehold
- Immaculate Condition

**Thirlmere Road,
London, SW16**



First Floor



Second Floor

Total area (approx.): 71.9 sq. m (773.9 sq. ft)

Dexters

Streatham
105 Streatham Hill
London
SW2 4UG
Sales
020 8674 7400

Energy Rating: E. We aim to make our particulars both accurate and reliable. However they are not guaranteed; nor do they form part of an offer or contract. If you require clarification on any points then please contact us, especially if you're traveling some distance to view. Please note that appliances and heating systems have not been tested and therefore no warranties can be given as to their good working order.

 **RICS** | Regulated
Estate Agent
and Letting Agent

dexters.co.uk