



Leigham Court Road, SW16

£375,000

Dexters



Leigham Court Road, SW16

OFFERS OVER This turn-key property has recently undergone a full refurbishment. Fitted with art deco features, bespoke kitchen featuring Samsung appliances as well as a wine cooler this space has been designed thoughtfully throughout.

The current owner has chosen a Farrow and Ball colour scheme and recently rewired and put in a new radiators. This property has two double bedrooms as with a south facing outlook over the mature communal grounds, the flat feels secluded. The development is gated and you have the benefit of an off-street parking space.

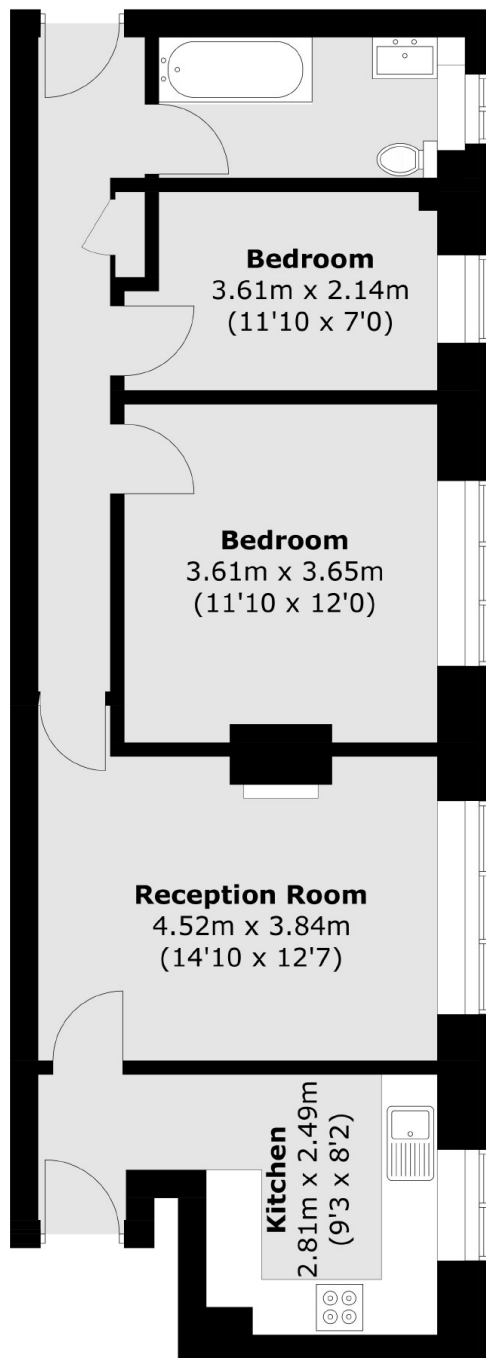
Benhurst Court is located right next to Streatham Common which houses The Rookery. This development can be easily accessed via regular bus routes and Streatham and Streatham Hill are equidistant providing links to London Victoria and London Bridge.

Features

- Two Double Bedrooms
- Excellent Condition
- Quiet location
- Gated Development
- Ground Floor
- Communal Grounds



Leigham Court Road, London, SW16



Total area (approx.): 62.0 sq. m (667.3 sq. ft)