



Hambro Road, SW16

£400,000

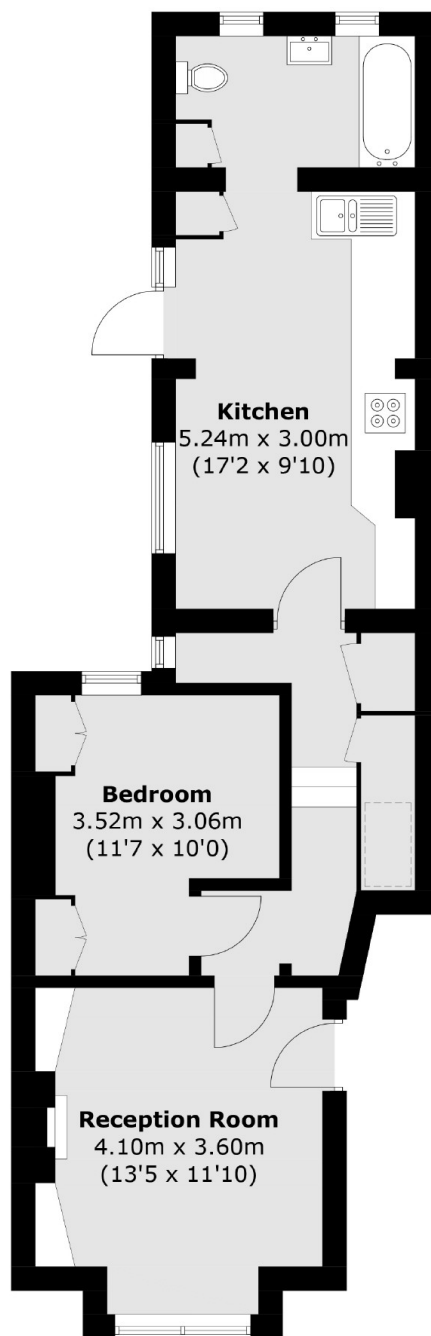
A charming one, double bedroom period property with mature landscaped garden. This home has a front facing reception, rear facing bedroom with built-in wardrobes and a spacious kitchen diner as well as a modern bathroom. This property's rear garden is a sun trap and perfect for summer evenings.

It is situated in a quiet residential street, close to Streatham Common excellent transport links at Streatham and Streatham Common Station with both the Thameslink service to London Bridge and Blackfriars and services into London Victoria. There are a great choice of local pubs, restaurants and shops within walking distance.

Features

- Bright Reception
- Double Bedroom
- Large Eat-In Kitchen
- Stylish Bathroom
- Private Garden
- Sought After Location

Hambro Road, London, SW16



Ground Floor

Total area (approx.): 55.2 sq. m (594.2 sq. ft)