



Hillside Road, SW2

£1,500,000

Dexters



Hillside Road, SW2

Offers in excess of £1,500,000 An immaculate semi-detached four bedroom home in the heart of Tulse Hill on Hillside Road. This uniquely designed home consists of four double bedrooms, three bathrooms, a bright open living space, large garden as well as an off-street parking space and garage.

Amassing nearly 3000 square foot, Hillview is one of two amazingly designed homes on Hillside Road situated up on the hill. Greeted with a grand atrium entrance this central space provides access to the separate reception with great views of Tulse Hill and beyond as well as the incredible open-plan kitchen and family area. The downstairs is brilliant for family living with bi-fold doors onto the landscaped garden with both paved and lawn areas, there is also side access into the garden for maintenance. With an octagon shape landing, four double bedrooms all lead of this uniquely designed space, two bedrooms have en suites whilst a well sized family bathroom services the other two rooms. This home also benefits from a downstairs w/c and utility room.

Hillside Road offers easy access to Tulse Hill and Streatham Hill station which have direct links to London Bridge, Clapham Junction, London Victoria and Blackfriars. The location is ideal for local amenities including Hillside park housing tennis courts as well as Brockwell Park. Shops and restaurants are nearby as well as great local schools and easy access into Dulwich.

Features

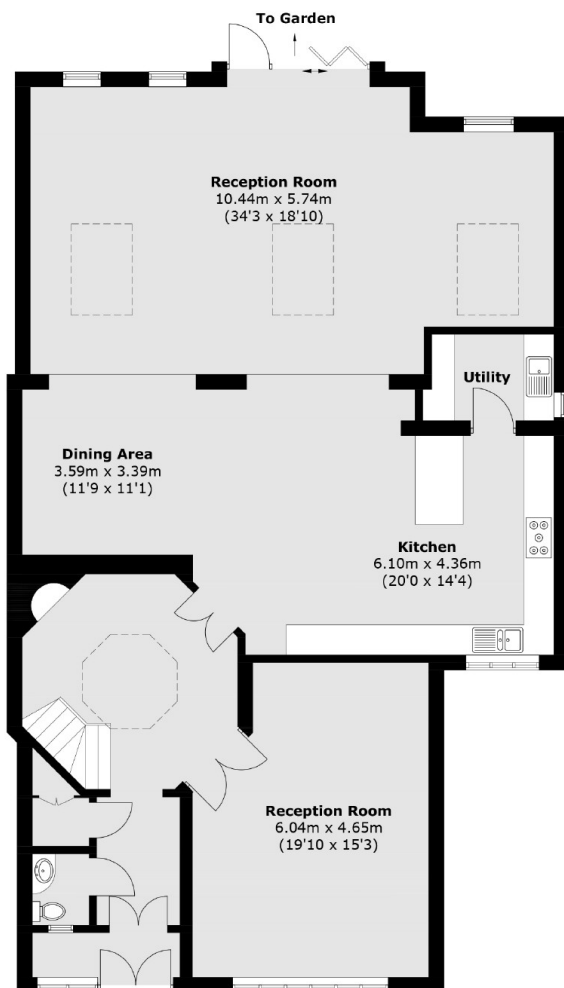
- Four Bedrooms
- Three Bathrooms
- Good Condition
- Amazing Views
- Garage
- Large Garden



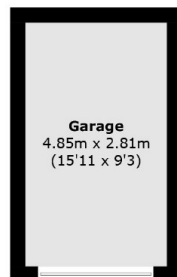




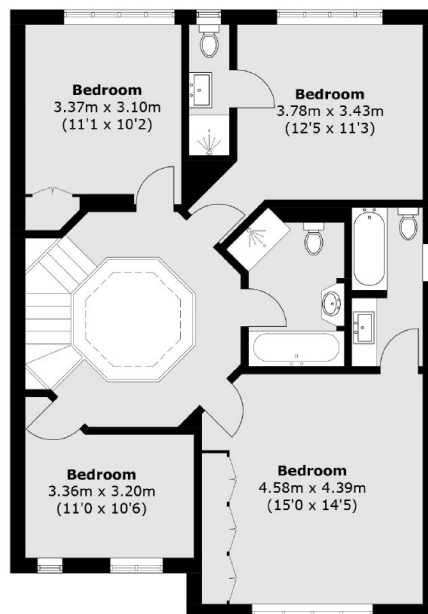
Hillside Road, London, SW2



Ground Floor



(Not Shown In Actual
Location / Orientation)



First Floor

Total area (approx.): 255.3 sq. m (2,748.0 sq. ft)

Garage area (approx.): 13.6 sq. m (146.4 sq. ft)