



Lydhurst Avenue, SW2

£475,000

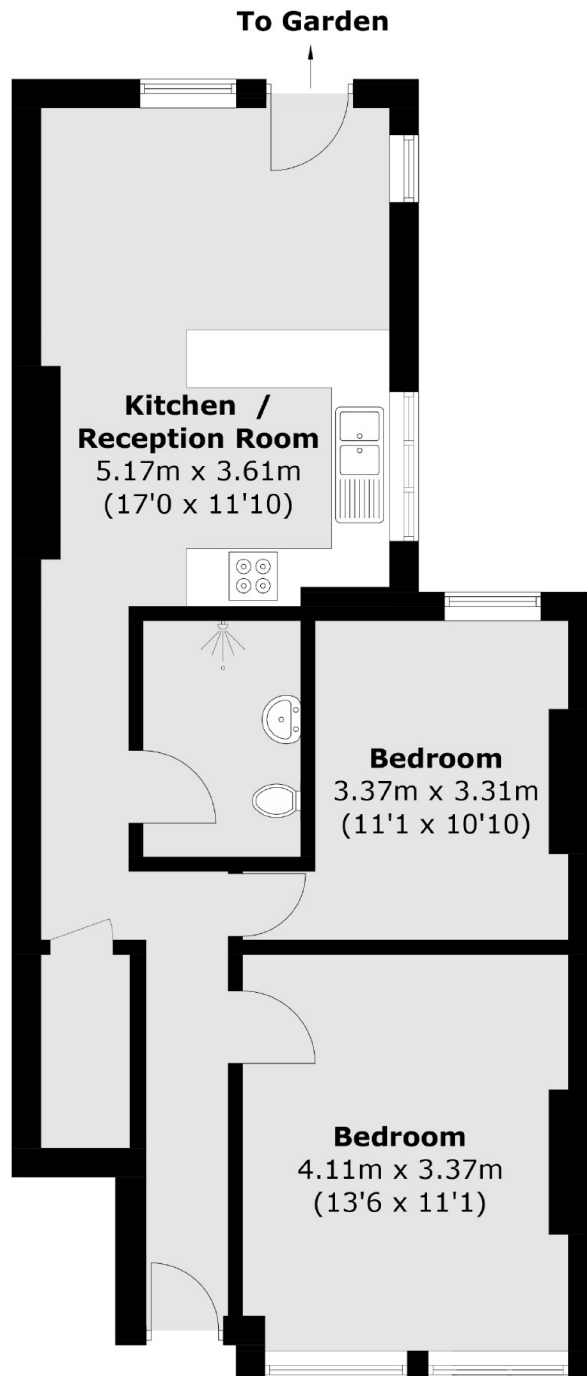
OFFERS OVER. In good condition, this ground floor red brick maisonette consists of two well sized bedrooms offering plenty of space and storage, large shower room which is followed by kitchen/lounge; great for entertaining and dining which then leads out to the sunny rear garden that is turfed for low maintenance.

Lydhurst Avenue is conveniently located within easy reach of Streatham Hill and Tulse Hill mainline station offering rail links to London Victoria (via Clapham Junction) and London Bridge. Walking distance to Streatham High Road with a range of shops, amenities and a plethora of schools.

Features

- No Onward Chain
- Two Bedroom
- Private Garden
- Own Front Door
- Close To Transport
- Open Kitchen/Lounge

Lydhurst Avenue, London, SW2



Total area (approx.): 58.1 sq. m (625.4 sq. ft)