



Chestnut Close, SW16

£500,000

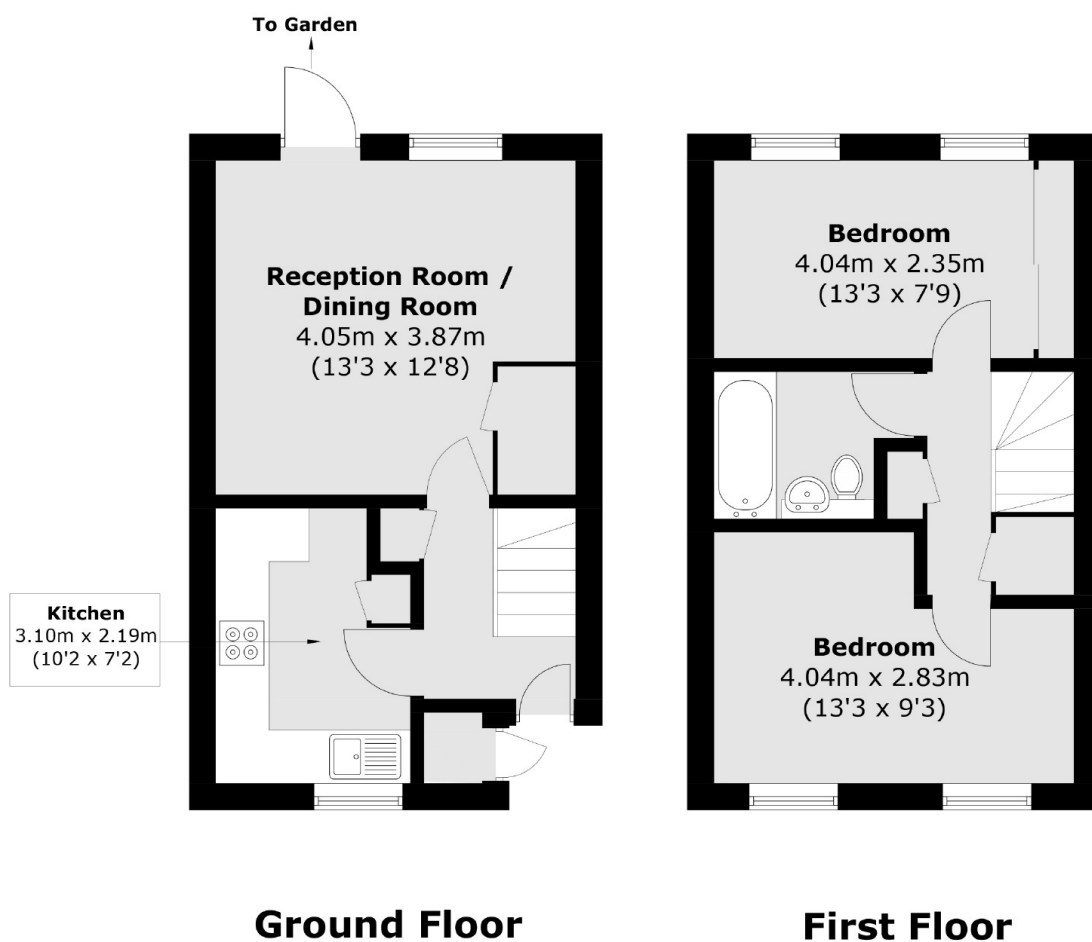
A well maintained freehold mews house just minutes from Streatham Common. Offering a separate kitchen, living room and garden on the ground floor along with two double bedrooms and bathroom on the first. This home also comes with parking and allocated space in the quiet close.

Chestnut Close is walking distance to West Norwood, Streatham Hill and Tulse Hill train stations which respectively have access to Victoria, Clapham Junction and London Bridge. Close to schools, shops/amenities and Streatham Common; this is a great location for leisure with the need to commute.

Features

- Freehold House
- Two Bedrooms
- Good Condition
- Parking
- Close to Common
- Good Storage

Chestnut Close, London, SW16



Total area (approx.): 55.3 sq. m (595.1 sq. ft)
External Cupboard : 0.6 sq. m (6.4 sq. ft)