



Lewin Road, SW16

£515,000

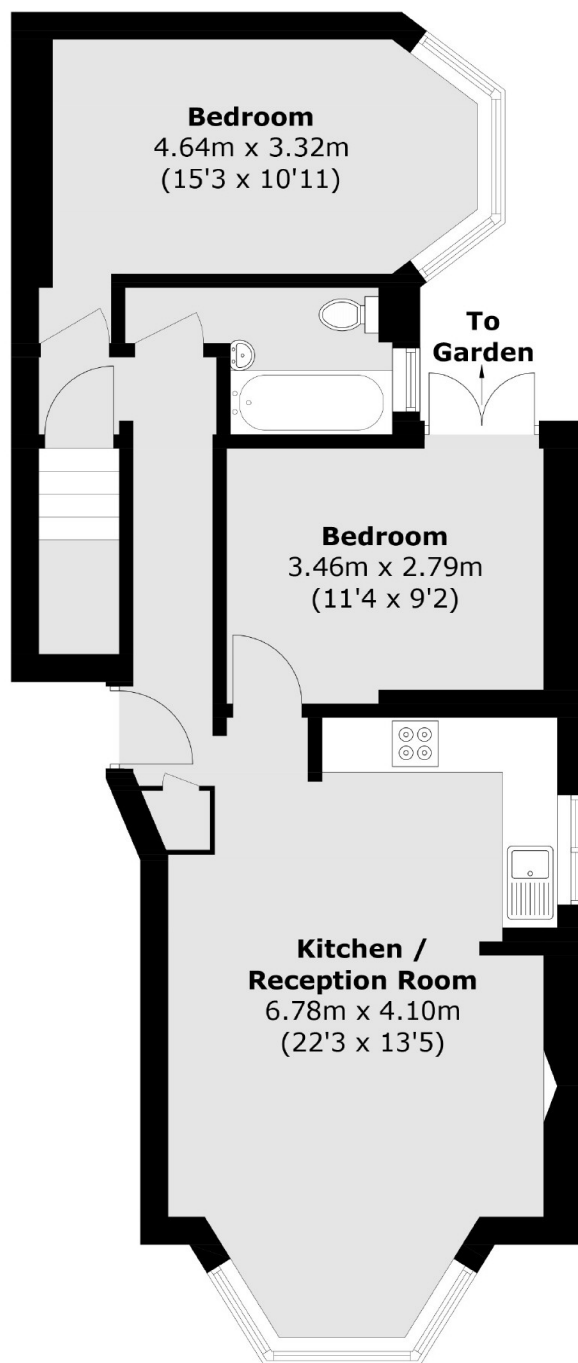
This lovely home boasts two double bedrooms, high ceilings, and an open-plan living area, located on one of the most sought after roads in Streatham Common. A communal garden is found to the rear which can be directly accessed from the flat.

Lewin Road is perfectly placed just off Streatham Common. Excellent transport links from Streatham and Streatham Common mainline stations are close as well a mix of bars, restaurants and shopping amenities on your doorstep.

Features

- Two Bedrooms
- Communal Garden
- Immaculate Condition
- High Ceilings
- Bright Flat
- Share of Freehold

Lewin Road, London, SW16



Total area (approx.): 60.4 sq. m (650.1 sq. ft)