



Babington Road, SW16

£450,000

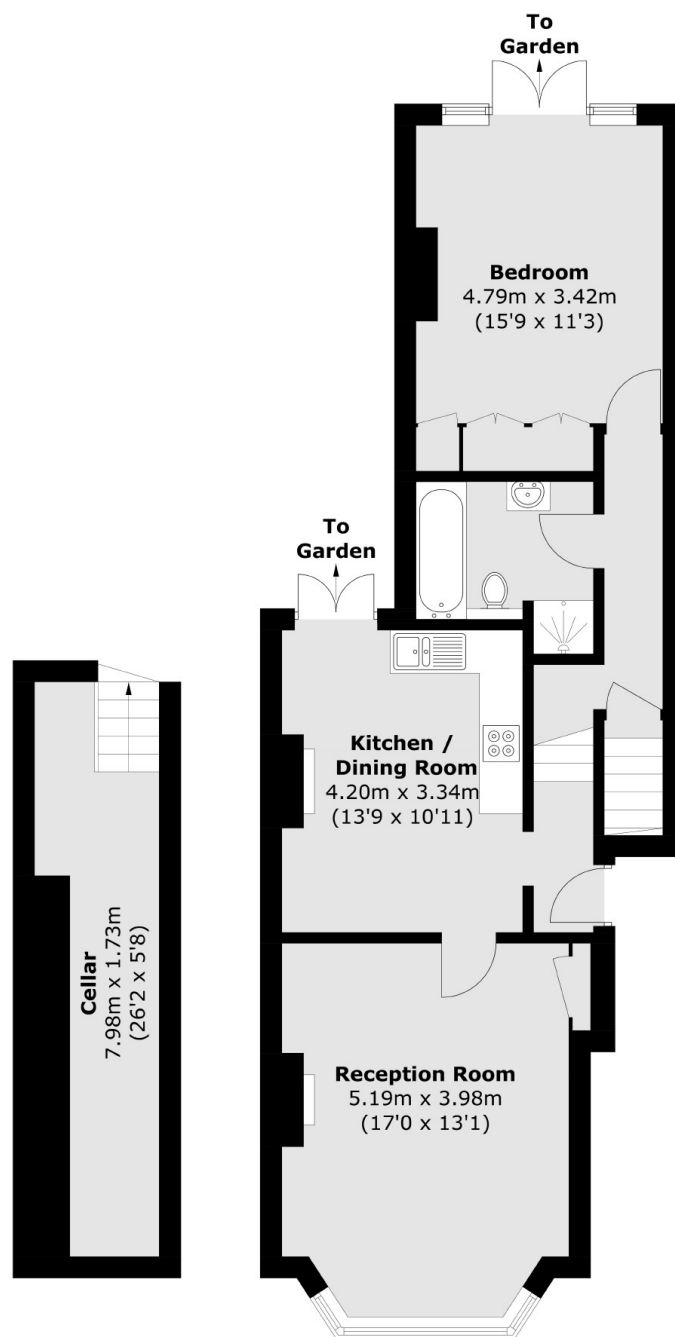
Spread over the ground floor of this period property is this spacious, one bedroom garden flat. The front reception is full of light and has tall ceilings with large bay window and period fireplace. The separate kitchen/diner has doors leading onto the private garden. The quiet bedroom is to the rear of the property and has built-in wardrobes with doors also onto the garden. This home has a very private feel and also comes with a share in the freehold.

Babington Road is located within an easy walk to Streatham Station which forms part of the Thameslink service. The property is also a short distance from Tooting Bec Common which houses the lido. Streatham High Road has a range of shops and restaurants

Features

- Large One Bedroom Flat
- Chain Free
- Spacious Reception
- Kitchen/Diner
- Private Mature Garden
- Share of Freehold

Babington Road, London, SW16



Basement

Ground Floor

Total area (approx.): 77.2 sq. m (830.9 sq. ft)