



Madeira Road, SW16

£350,000

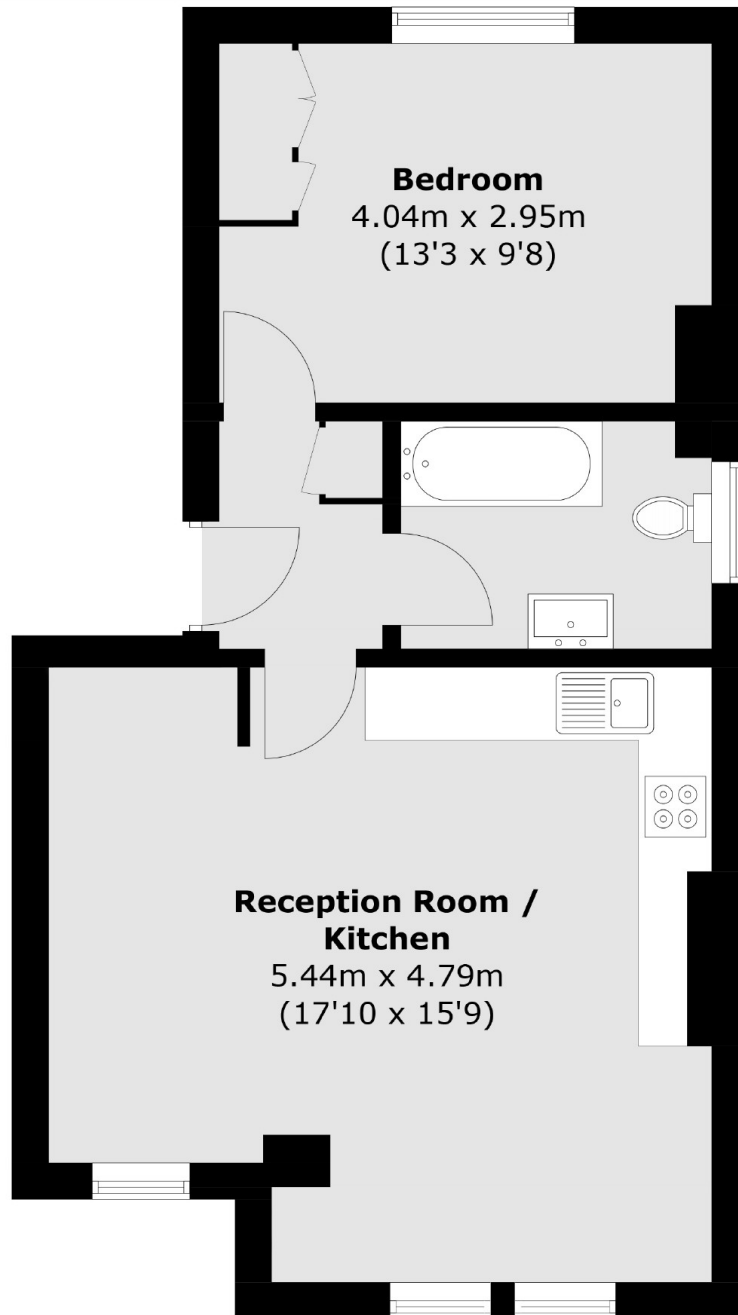
Completely re-configured and refurbished by the current owners this immaculate one double bedroom home has not only a large and bright open plan living area but spacious rear bedroom with built-in wardrobe and a modern family bathroom. This share of freehold property has a private share of the rear garden, which houses an outside shed.

Madeira Road is a tree lined street allowing free parking and is only a short walk from Streatham mainline which offers frequent services to London Bridge and the City. The property is situated within walking distance to Streatham High Road with its shops, cafes, restaurants and bars, as well as Streatham Common.

Features

- Open-Plan Living
- Immaculate Condition
- Recently Refurbished
- Private Garden
- Large Rear facing Bedroom
- Share of Freehold

Madeira Road, London, SW16



Total area (approx.): 46.5 sq. m (500.5 sq. ft)