



## Streatham High Road, SW16

£395,000

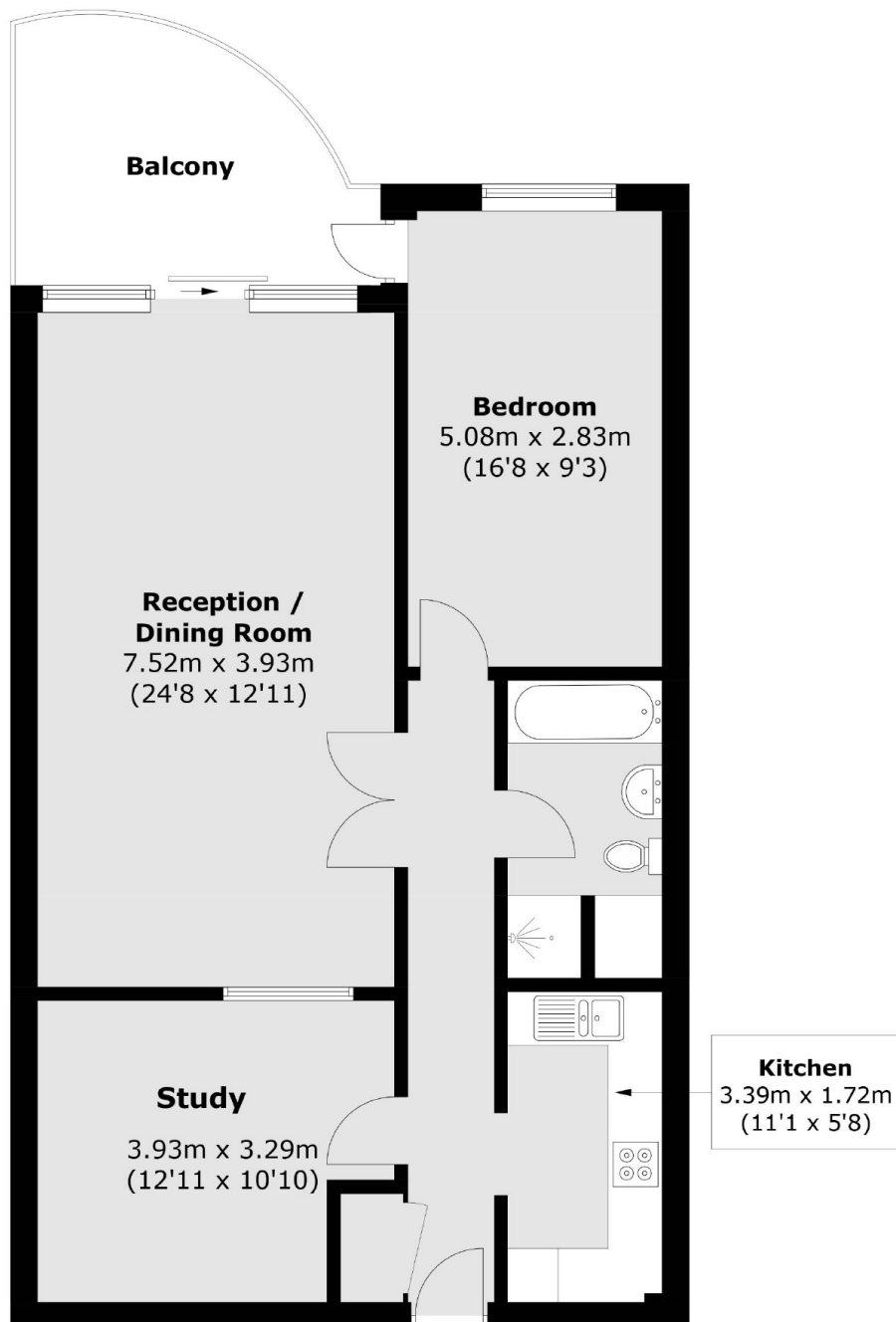
At over 860sqft is this incredible one bedroom apartment with further sleeping or study area. The living room is spacious and provides sliding doors onto the large balcony, whilst the bedroom has space for plenty of storage. There is also a separate kitchen and neutrally decorated bathroom

The Picture house is located in the heart of Streatham Hill on the doorstep of the local amenities, restaurants and bars. Streatham Hill Station is a short walk away offering links to London Victoria via Clapham Junction with regular bus services into Brixton town centre and surrounding areas.

### Features

- Large Double Bedroom
- Spacious Balcony
- Open Living/Dining Room
- Internal Extra Room
- Separate Kitchen
- Close to Station

# Streatham High Road, London, SW16



Total area (approx.): 80.3 sq. m (864.3 sq. ft)  
Balcony : 10.0 sq. m (107.6 sq. ft)