

**South Oak Road, SW16**

£975,000

**Dexters**





## South Oak Road, SW16

Configured over three floors, this four bedroom townhouse is just under 1,700sqft. Providing plenty of light throughout, this home has an amazing open-plan living area with modern kitchen and dining space.

The main room opens onto the landscaped garden, with two parking spaces directly outside the garden gate. Additionally, the back garden can be accessed via the secure gated car park and communal garden. The front of the property overlooks the local playing field.

One of the best selling features of this family home is the incredible Primary Suite located at the top of this home. There is plenty of space to enjoy with large en-suite and ample storage and unique high ceilings and feature window.

The middle floor has three further bedrooms, one with modern en-suite and the other two bedrooms are serviced by a three piece family bathroom. This home is ready to move-into and perfect for a growing family.

Situated off Streatham Common, Valley Road is approximately half a mile from Streatham Station which has fast services into both London Bridge and Blackfriars, and offers a 315 hail and ride bus service giving swift access to West Norwood, Streatham and Balham stations. Streatham High Road offers numerous restaurants, bars and shopping facilities.

- Features**
- Open Plan Kitchen/Dining
  - Four Double Bedrooms
  - 2 x Allocated Parking Spaces
  - Four Bathrooms
  - Convenient Location
  - Immaculate Condition



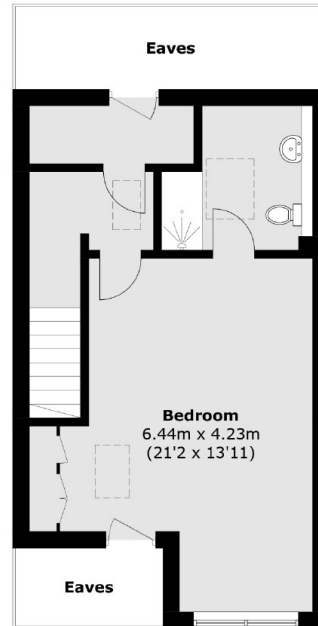




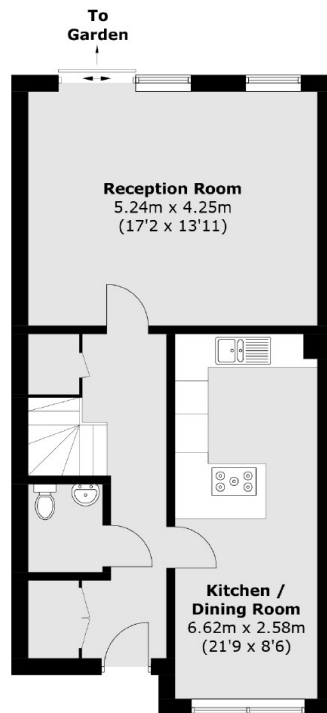




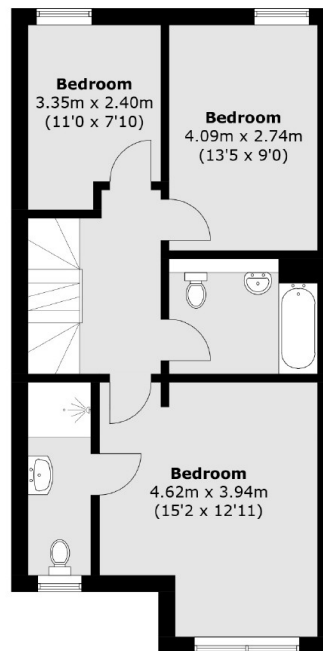
# South Oak Road, London, SW16



**Second Floor**



**Ground Floor**



**First Floor**

Total area (approx.): 154.7 sq. m (1,665.2 sq. ft)  
(Excluding Eaves)