



Streatham High Road, SW16

£425,000

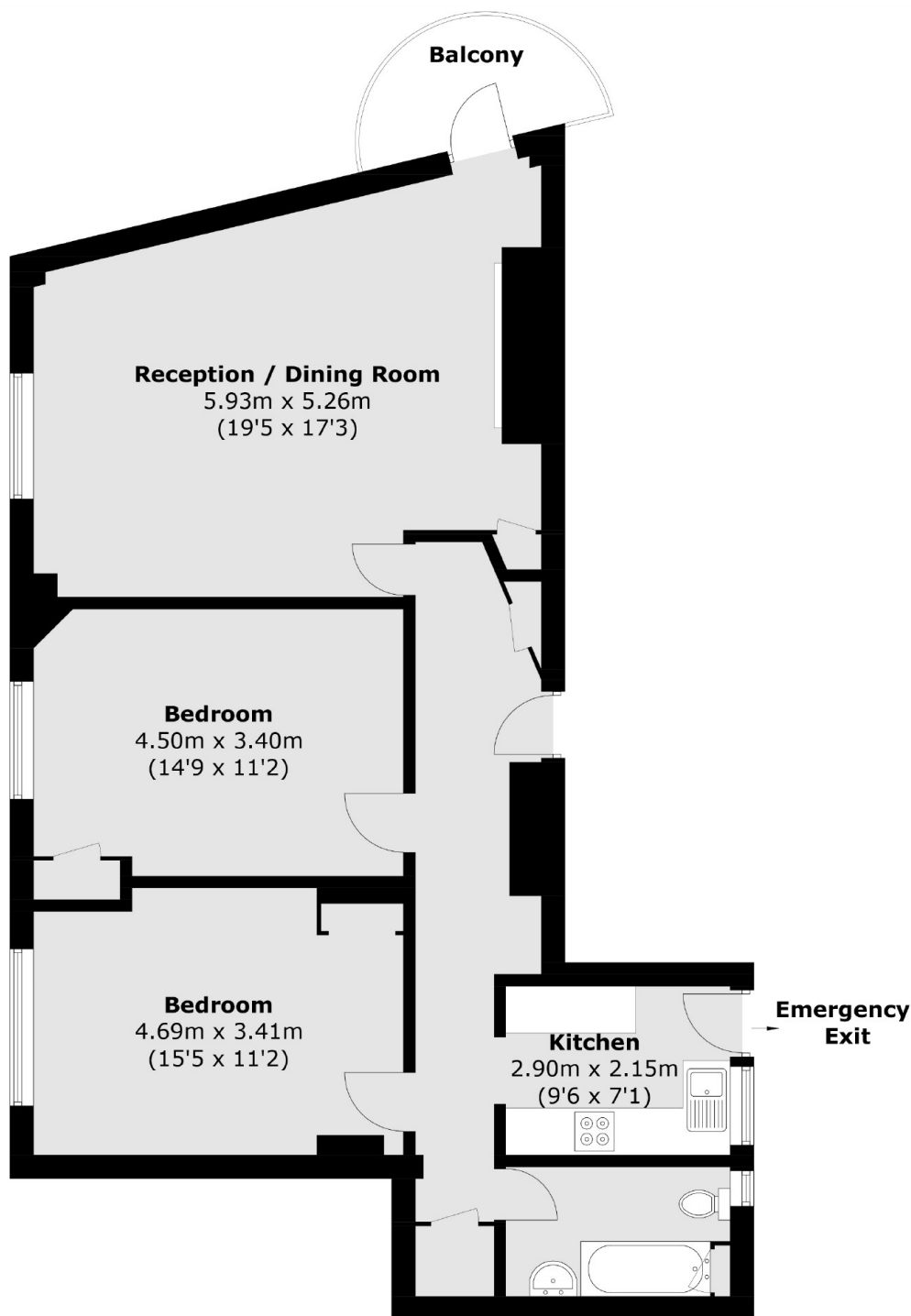
Located within one of Streatham most sought after mansion blocks is this stunning two double bedroom apartment which occupies over 960 sqft of generous living accommodation and offers a shared balcony and right on the door step of the amenities of Streatham Hill.

Located along Streatham High Road, this central location is always highly sought after. Moments to the independent shops, cafés and train station along Streatham Hill and within easy reach of Tooting Bec Common.

Features

- Two Double Bedrooms
- Separate Kitchen
- Shared Balcony
- Over 960sqft
- Close to Station
- Great Condition

Streatham High Road, London, SW16



Total area (approx.): 90.0 sq. m (968.7 sq. ft)
Balcony: 4.1 sq. m (44.1 sq. ft)