

Beechcroft Close, SW16

£450,000

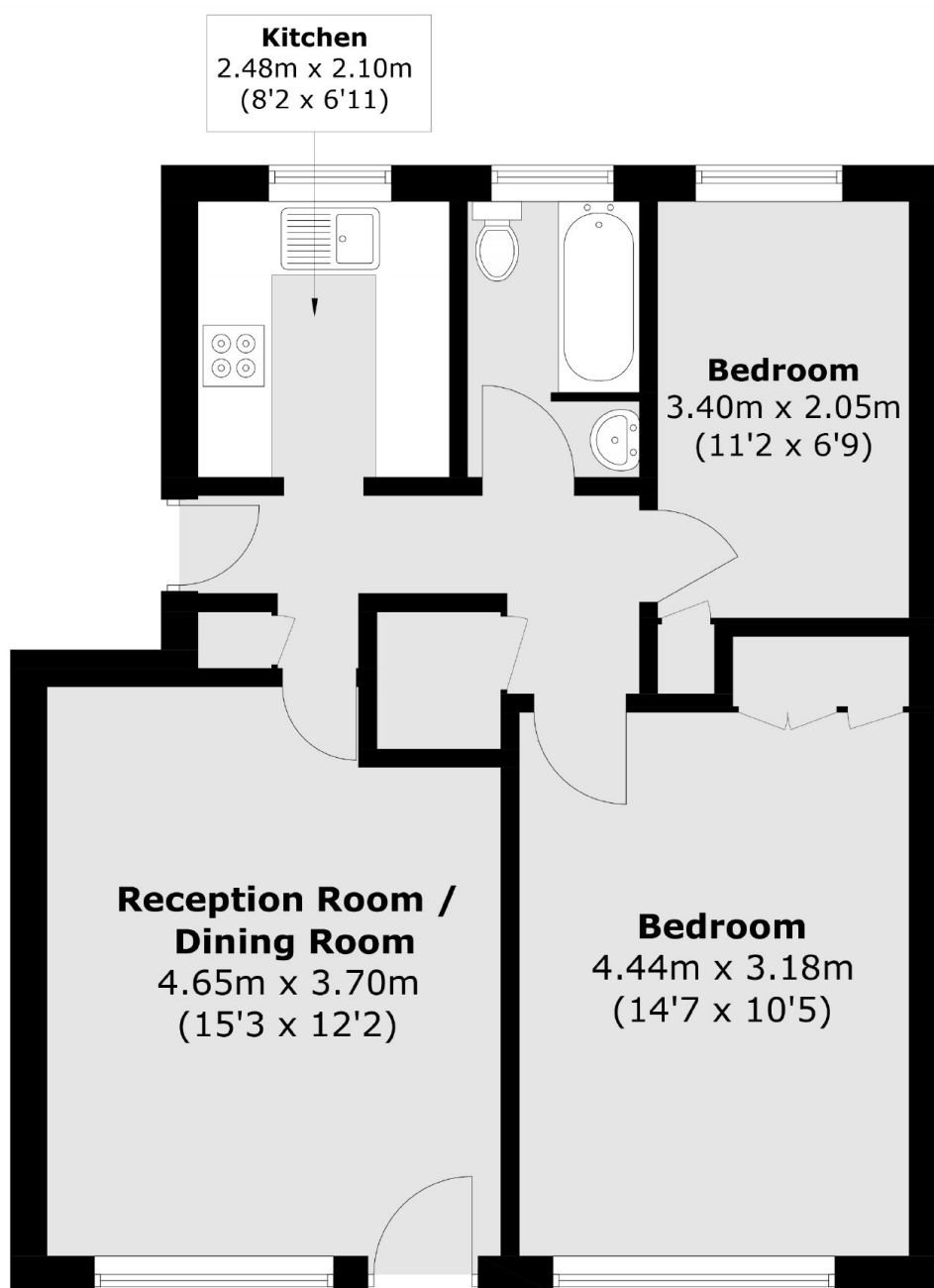
Located within a gated development is this rarely available two double bedroom, garden flat. The garden to the rear has been fully landscaped and has both a paved area as well as a lawn with mature shrubs. The property itself has a bright reception room as well as a modern kitchen and bathroom. There is also an off-street parking space belonging to the property.

Situated off Streatham Common, Valley Road is approximately half a mile from Streatham Station which has fast services into both London Bridge and Blackfriars, and offers frequent bus service giving swift access to West Norwood, Streatham and Balham stations. Streatham High Road offers numerous restaurants, bars and shopping facilities.

Features

- Two Double Bedrooms
- Large Private Garden
- Modern Kitchen
- Bright Flat
- Gated Development
- Off-Street Parking

Beechcroft Close, London, SW16



Total area (approx.): 55.9 sq. m (601.7 sq. ft)