



Green Lane, SW16

£3,200 Per calendar month

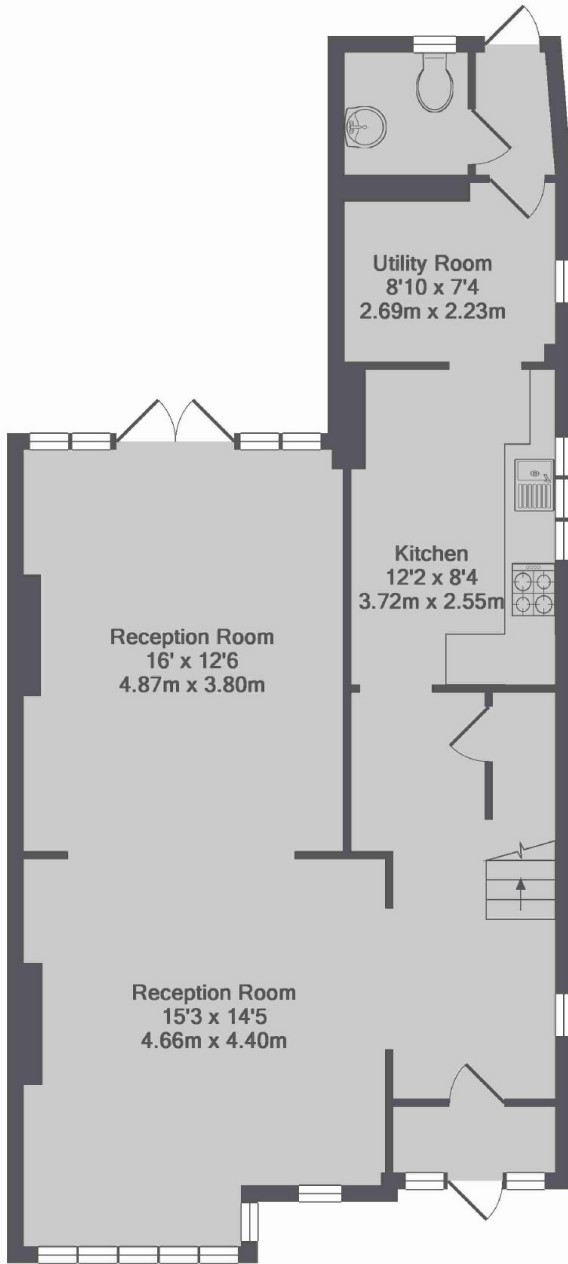
A great four bedroom house finished to a high standard throughout, offering great size bedrooms, a private garden and off street parking with side access to private garage.

Located on the very popular and well known Green Lane within reachable distance from Norbury Station for local transport.

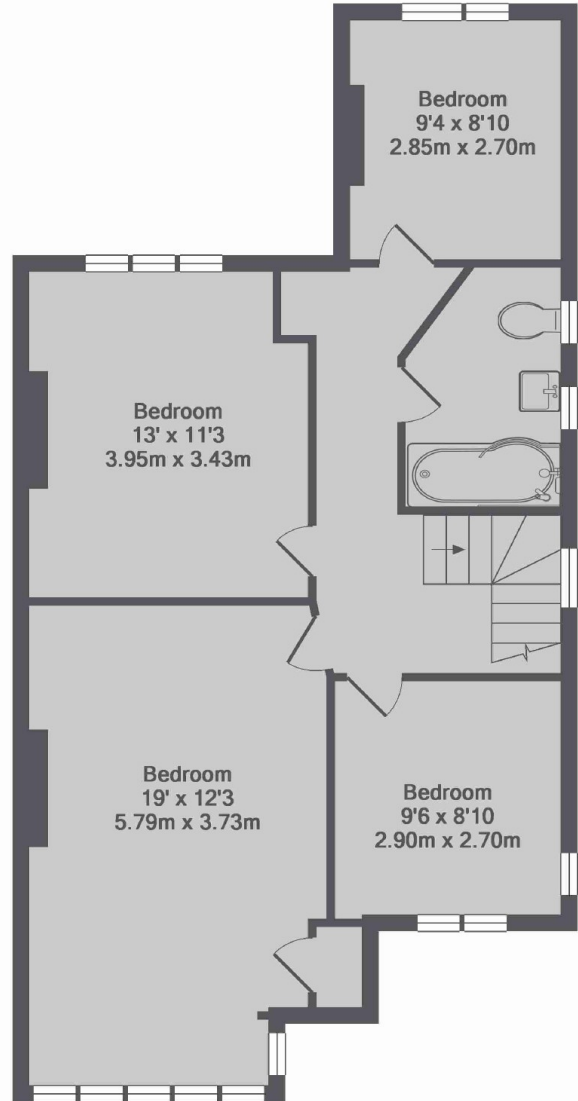
Features

- Four Bedrooms
- Fully Renovated
- Two Bathrooms
- Off Street Parking
- Private Garden
- Garage

Green Lane,
London, SW16



Ground Floor



1st Floor

Green Lane, SW16
Total Approx. Floor Area 1497 Sq.Ft. (139.1 Sq.M.)