



Knollys Road, SW16

£400,000

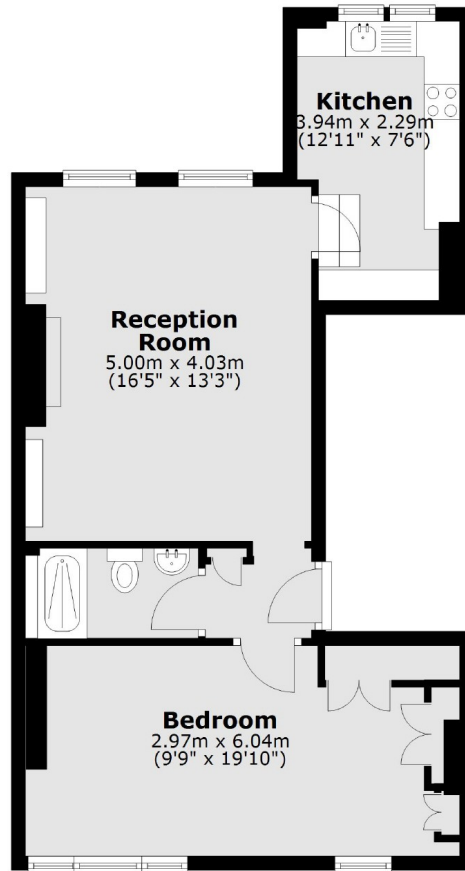
In immaculate condition throughout is this large, one double bedroom apartment. This home has a large reception room with space for dining as well as a stylish modern kitchen located just off the main room. The bedroom is bright and has plenty of storage with fitted wardrobes.

Knollys Road is located equidistant between Streatham and Tulse Hill with a great selection of local amenities on your door step including access to both Tulse Hill and Streatham Hill Mainline Stations providing frequent rail links into central London.

Features

- Immaculate Condition
- One Large Bedroom Flat
- Good Condition
- Modern Kitchen
- Period Conversion
- Large Reception

Knollys Road, London, SW16



Total area: approx. 52.7 sq. metres (567.5 sq. feet)