



Leigham Vale, SW16

£525,000

This two bedroom period conversion is being offered to the market with no onward chain. This bright property benefits from a separate, front facing kitchen/diner, two double bedrooms, a bright rear living room with doors leading out to a beautiful large garden.

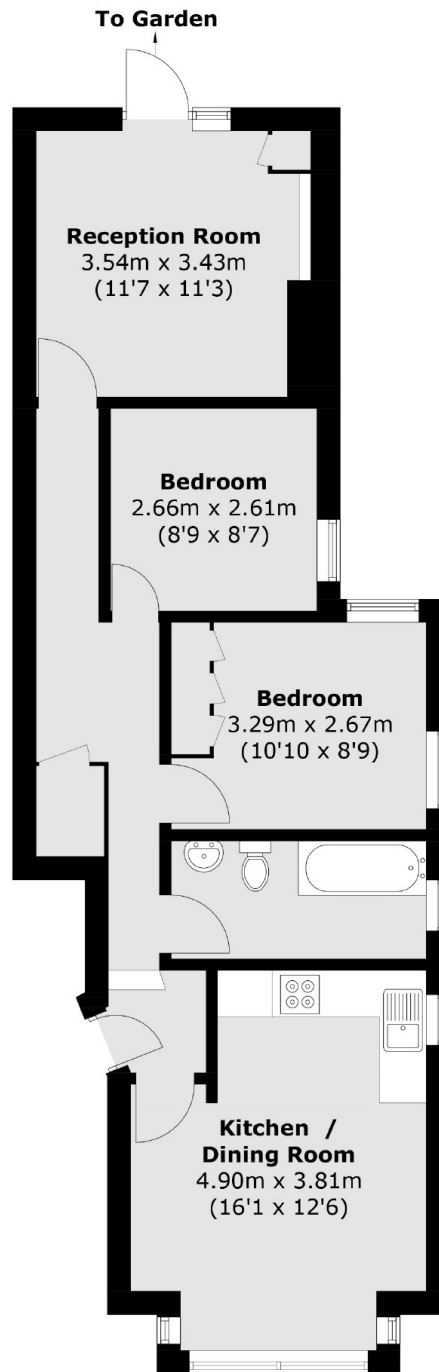
The garden has been maintained well and houses a garden room which is perfect for a garden office or extra storage. The rest of the garden is filled with plenty of plants and a pergola, perfect for those summer evenings. This home also comes with the added benefit of a share in the freehold

Leigham Vale is located close to Tulse Hill Station providing links via the Thameslink service to London Bridge and Blackfriars as well as Streatham Hill providing links to London Victoria. West Norwood high street and Streatham High road are also a short distance away which offer an array of shops and local amenities.

Features

- Period Conversion
- Separate Kitchen/Diner
- Convenient Location
- Large Garden
- Over 660 Sq Ft
- No Chain

Leigham Vale, London, SW16



Total area (approx.): 62.1 sq. m (668.4 sq. ft)