



Streatham High Road, SW16

£399,000

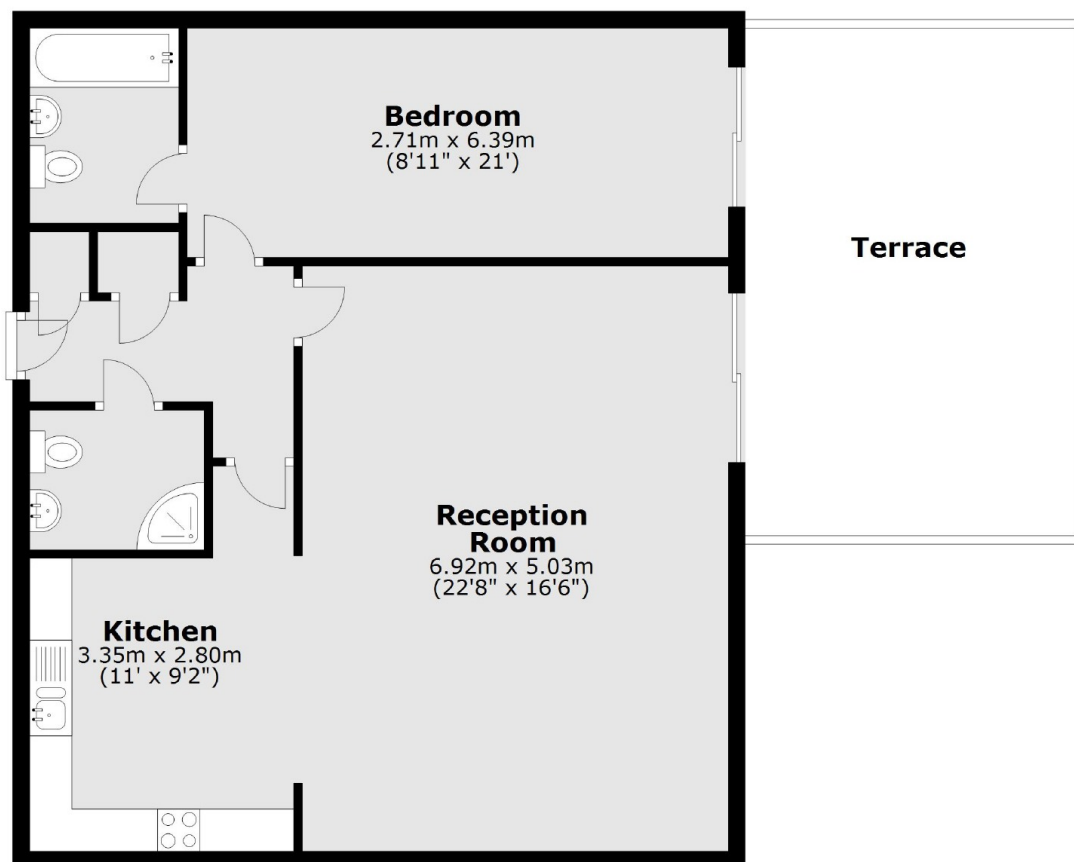
At over 850sqft this huge one bedroom penthouse is perfect for any buyer looking for plenty of space to entertain and enjoy. This lovely home has a large bedroom, modern shower room and separate kitchen. The added bonus of a large terrace is perfect for those summer evenings.

The Picture house is located in the heart of Streatham on the doorstep of the local amenities, restaurants and bars. Streatham Hill Station is a short walk away offering links to London Victoria via Clapham Junction.

Features

- Over 850sqft
- Private Terrace
- Separate Kitchen
- Immaculate Condition
- Fantastic Entertaining Space
- Close to Station

Streatham High Road, London, SW16



Main area: Approx. 80.3 sq. metres (864.0 sq. feet)
Plus roof terrace, approx. 24.1 sq. metres (259.0 sq. feet)