



Grasmere Road, SW16

£500,000

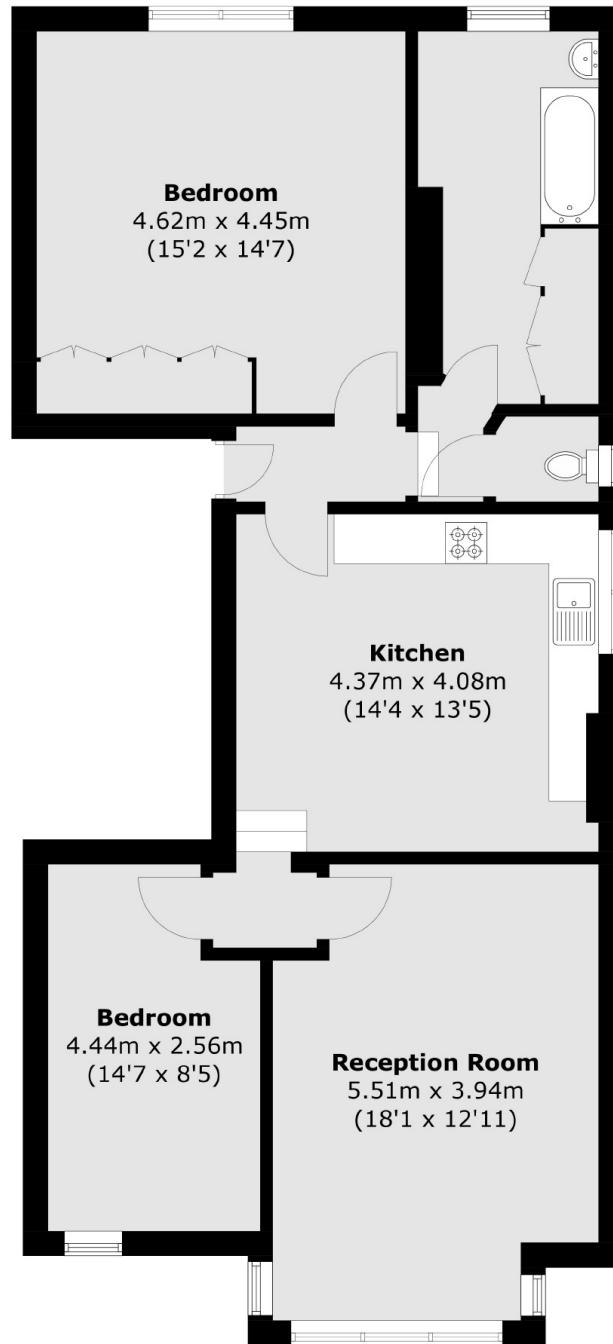
At just under 950sqft is this two double bedroom apartment. This charming home has ample living space with large kitchen diner and separate front facing reception and two double bedrooms with large bathroom. This period property also has the added benefit of a communal garden, double glazed sash windows and a share in the freehold.

Grasmere Road is a quiet residential location very convenient for Streatham Common and Streatham High Road's restaurants and shops. Excellent transport links nearby include Streatham Station with links to the city and numerous bus routes.

Features

- Two Double Bedrooms
- Communal Garden
- Kitchen/Diner
- Separate Reception
- Share of Freehold
- Quiet Location

Grasmere Road,
London, SW16



First Floor

Total area (approx.): 88.0 sq. m (947.2 sq. ft)