



## Palace Road, SW2

£1,095,000

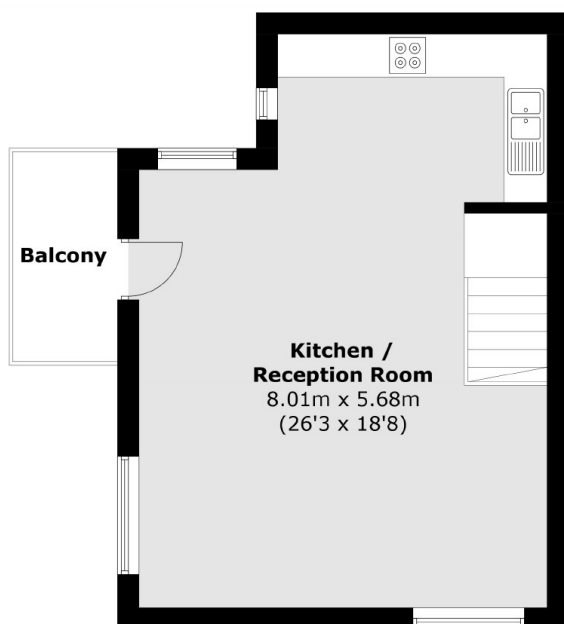
A modern 1220 sq ft three bedroom future proofed semi detached home set within a small gated development off Brixton Hill.

Palace Road is a pretty tree lined residential street close to the junction of Brixton & Streatham Hill.

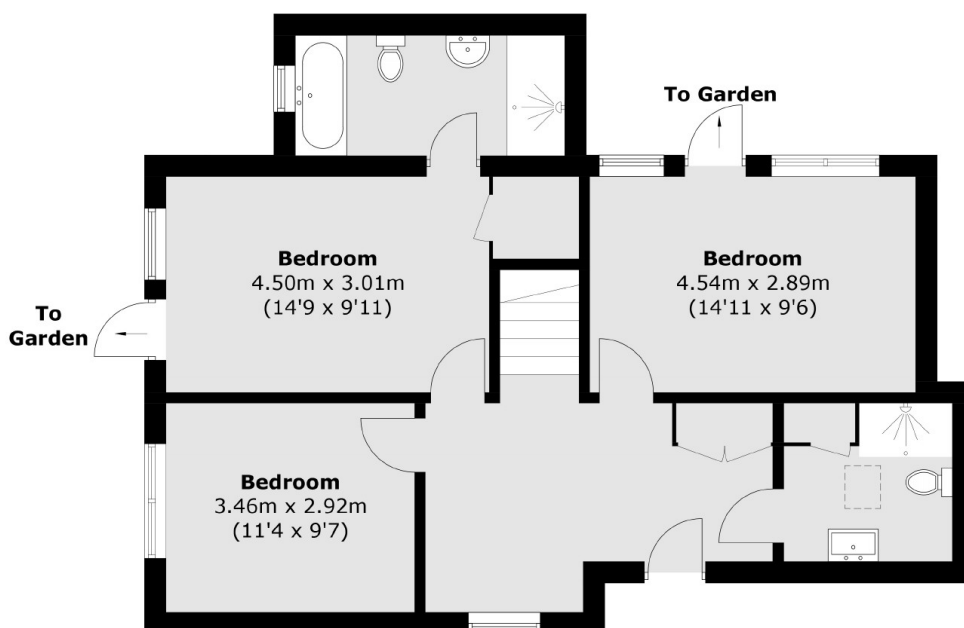
### Features

- Upside Down Living
- Gated Development
- 26ft Open Plan Reception
- Two Bathrooms
- Wrap Around Garden & Balcony
- Off Street Parking

# Palace Road, London, SW2



**First Floor**



**Ground Floor**

Total area (approx.): 110.8 sq. m (1,192.6 sq. ft)  
Balcony (approx.): 4.3 sq. m (46.3 sq. ft)