



**Woodfield Avenue, SW16**

**£575,000**

**Dexters**



## Woodfield Avenue, SW16

At just under 1,000sqft is this three double bedroom property. With a large reception room and a separate kitchen this property has a versatile layout. All of the rooms are spacious and the main bedroom has a modern en-suite. The family bathroom has been fully renovated by the current owners and houses a four piece suite. There is also a further room ideal for storage or a study.

This property is located on a prime residential street between Balham and Streatham Hill Station and has a communal garden, first come first serve off-street parking as well as a communal garden.

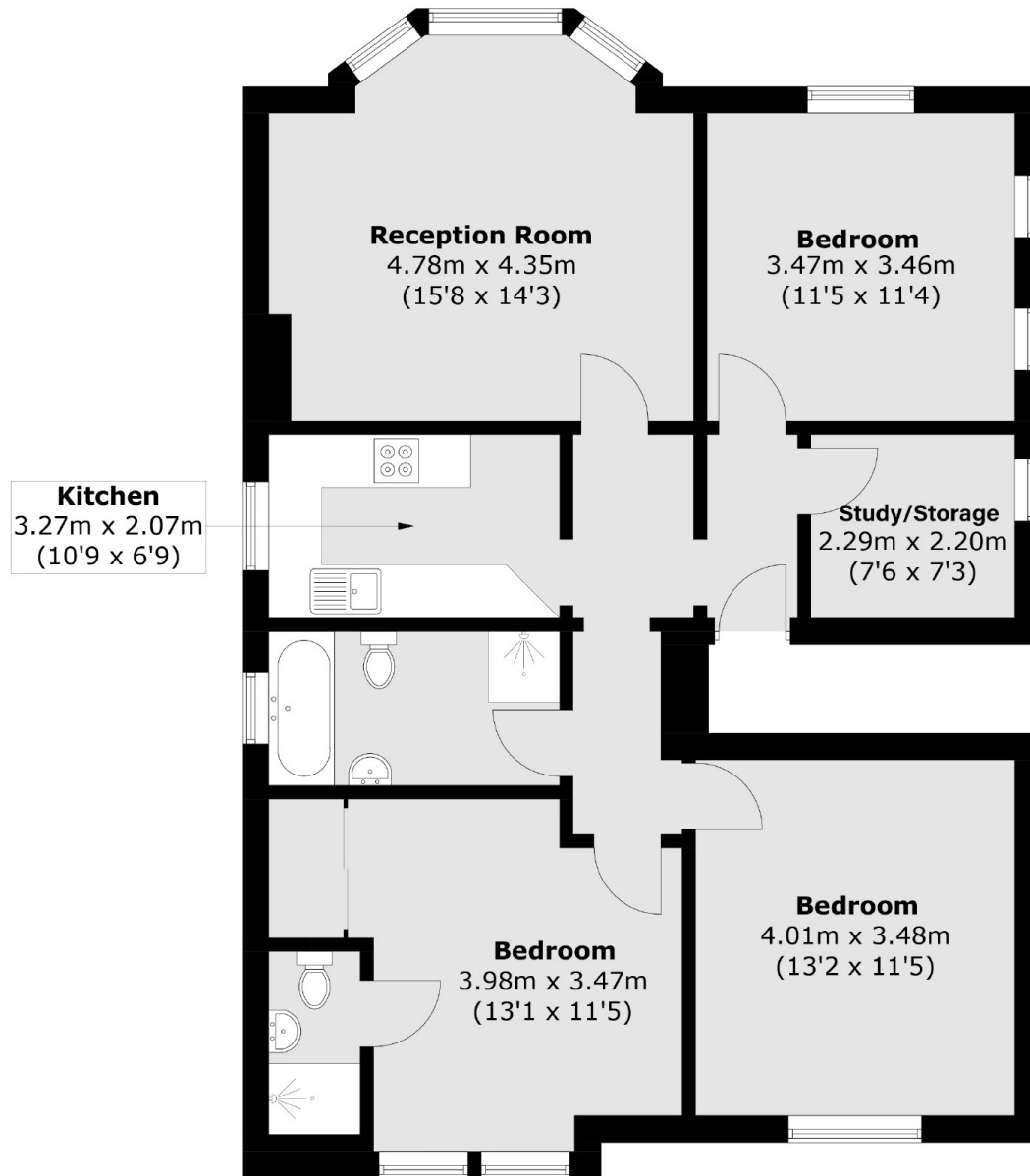
Woodfield Avenue is a popular residential street situated off Garrads Road close to the open spaces of Tooting Common. Transport to The City and West End is via Streatham Hill mainline and various bus routes to Balham and surrounding areas.

### Features

- Three Bedrooms
- Communal Bike Storage
- Two Bathrooms
- Communal Garden
- Share of Freehold
- First Come First Serve Parking



# Woodfield Avenue, London, SW16



Total area (approx.): 92.3 sq. m (993.5 sq. ft)