



Mount Ephraim Road, SW16

£2,050,000

Dexters



Mount Ephraim Road, SW16

At just under 2,000sqft is this four double bedroom, detached house. Situated on a substantial plot, this property has a large driveway with enough room for four cars and a rear landscaped private garden with both a paved and lawn area.

Downstairs there is an open double reception, separate kitchen and further snug. A handy garage is located at the front of the property, ideal for storage and bikes. Upstairs there are four double bedrooms serviced by a family bathroom and separate w/c. This incredible home is flooded with natural light and space, creating a perfect family home.

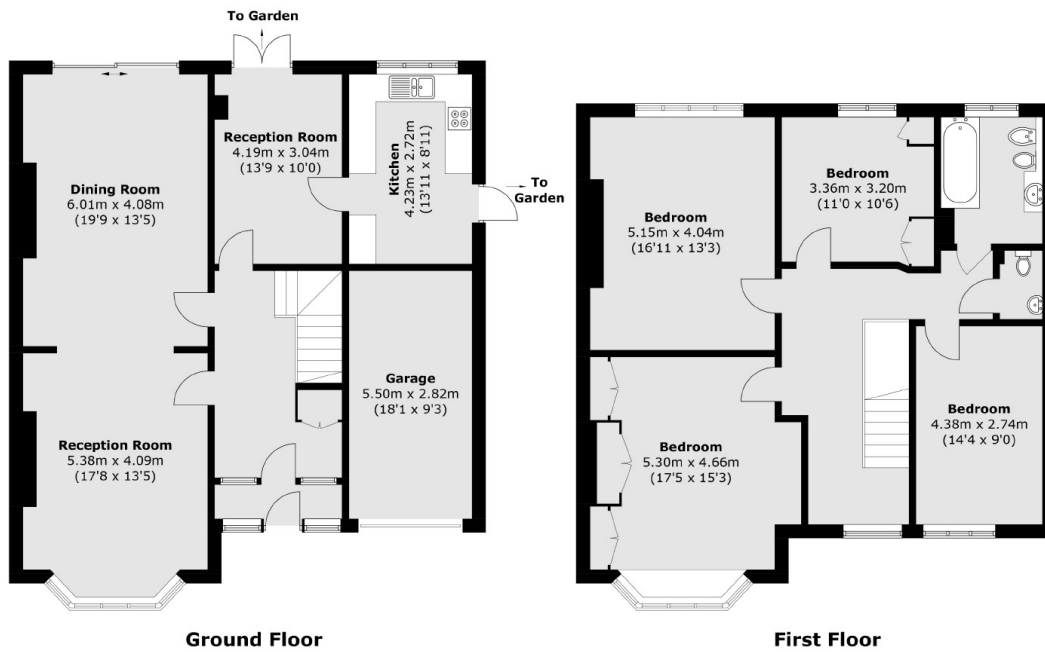
Located just off Streatham High Road moments from all the shops and restaurants Streatham has to offer. Streatham Hill and Streatham Station offers services into Clapham Junction, London Bridge and Victoria. Tooting Bec Common is nearby.

Features

- Four Double Bedrooms
- Detached House
- Large Driveway
- Garage
- Long Garden
- Potential to Extend



Mount Ephraim Road, London, SW16



Total area (approx.): 183.3 sq. m (1,973 sq. ft)
Garage (approx.): 14.9 sq. m (160.4 sq. ft)