



Lansdowne Wood Close, SE27

£1,500 Per calendar month

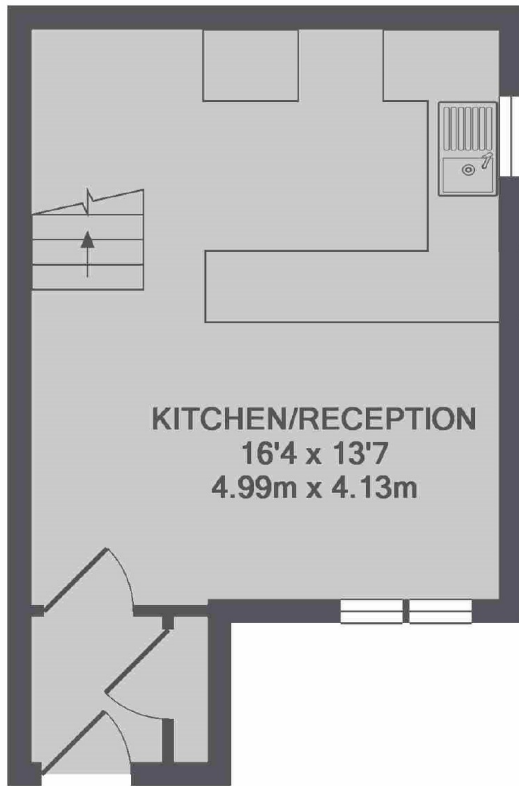
A split-level, one bedroom, end of terrace house. This property has been recently refurbished and modernised throughout creating a lovely home.

Lansdowne Wood Close is situated just off Royal Circus and ideally positioned within close proximity to Norwood High Street and West Norwood mainline station serving both London Bridge and London Victoria providing easy access into town.

Features

- Full House
- Newly Refurbished
- One Double Bedroom
- Open Plan
- Modern Bathroom
- Ideal Location

Lansdowne Wood Close, London, SE27



GROUND FLOOR



1ST FLOOR

TOTAL APPROX. FLOOR AREA 468 SQ.FT. (43.5 SQ.M.)