



Blegborough Road, SW16

£1,550 Per calendar month

A modern one double bedroom flat finished to a high standard, open plan kitchen/reception, double bedroom with plenty of storage. Perfect for a single professional or couple.

Blegborough Road is a popular residential street situated on the borders of Streatham and Tooting. Streatham Common mainline station for access to London Bridge and London Victoria is less than half mile away. Streatham High Road and the open spaces of Tooting Common are also within easy reach.

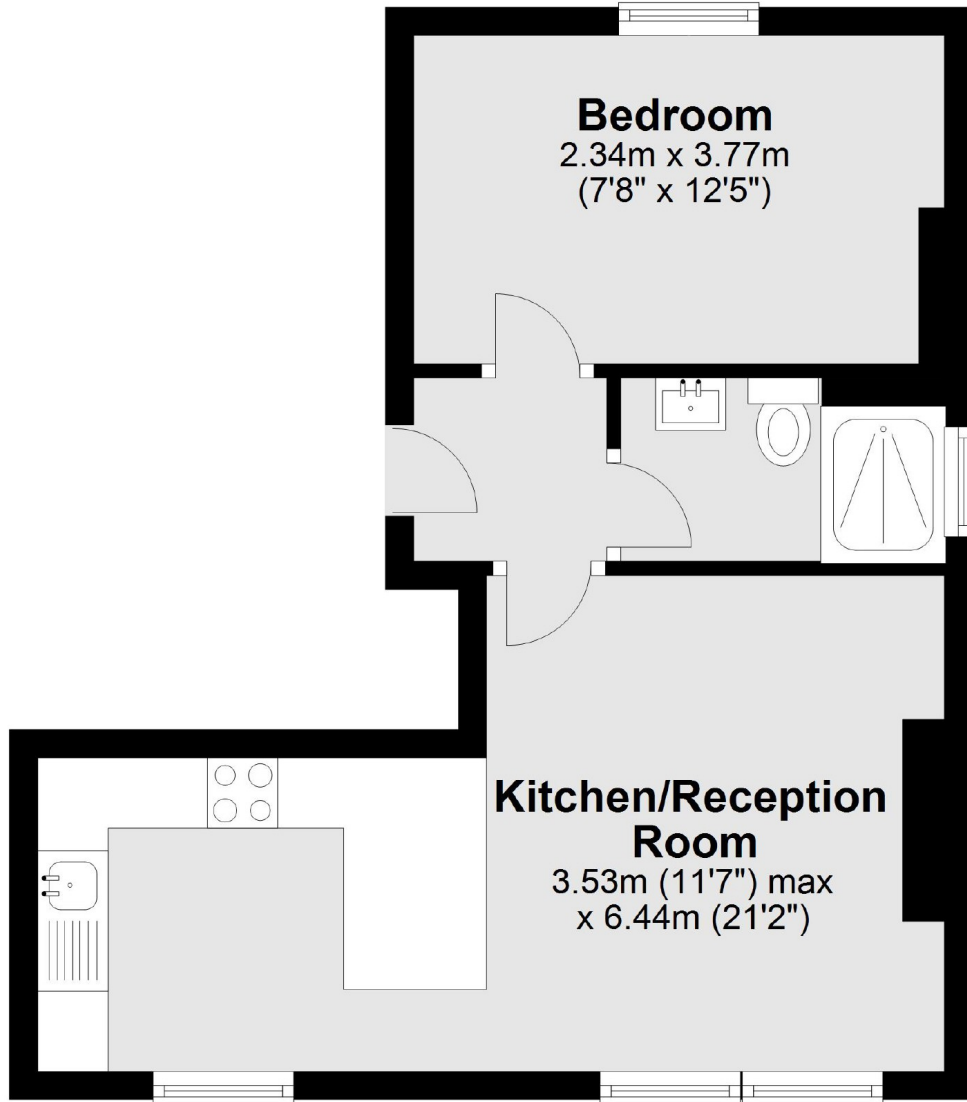
Features

Immaculate Condition
One Double Bedroom

First Floor Flat
Modern Bathroom
Wooden Floors

Blegborough Road,
London, SW16

First Floor



Total area: approx. 33.0 sq. metres (355.6 sq. feet)