



Drewstead Road, SW16

£450,000

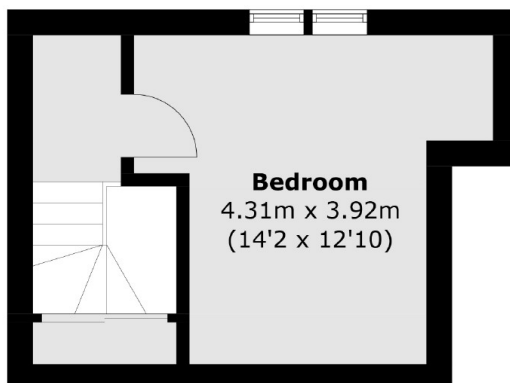
At over 750sqft is this two double bedroom, split level apartment located close to the station. In good condition throughout this home is ready to move into yet provides potential to put your own stamp on it. It is also being offered with no onward chain.

Drewstead Road is a very desirable tree-lined street perfectly situated for everything Streatham has to offer. With Tooting Common located at the end of the road it also provides easy access to rail links from Streatham Hill mainline station and frequent bus routes to Brixton town centre.

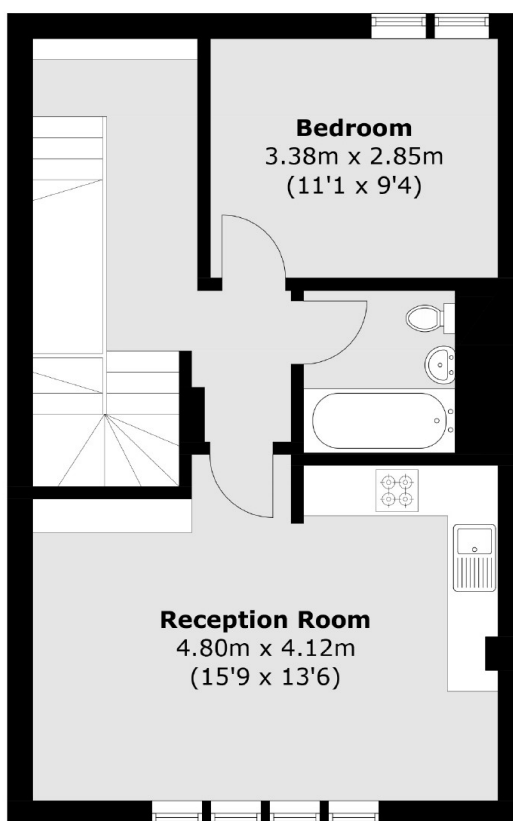
Features

- Two Double Bedrooms
- Split Level
- Great Location
- Chain Free
- Open-Plan
- Period Conversion

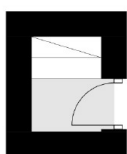
Drewstead Road, London, SW16



Third Floor



Second Floor



First Floor

Total area (approx.): 70.4 sq. m (757.8 sq. ft)