



Covington Way, SW16

£695,000

Dexters



Covington Way, SW16

Offered with no onward chain is this double fronted, four bedroom family home. With ample off-street parking and a long back garden and an open-plan living area, this property has plenty to offer.

Additional to the open-plan living/kitchen area there is a further separate reception room, perfect for a more formal living room. Upstairs there are four bedrooms as well as a family bathroom.

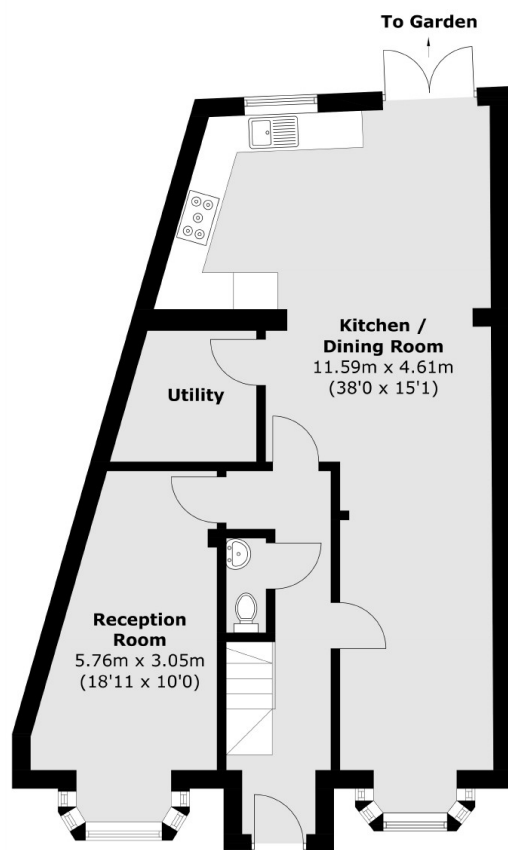
Covington Way is a quiet street surrounding Norwood Grove and the Rookery Gardens. This leafy part of Streatham has plenty of green open spaces to enjoy. You can access both Norbury and Streatham Stations which have access into London Victoria. Streatham High Road offers a great mix of pubs, shops and restaurants.

Features

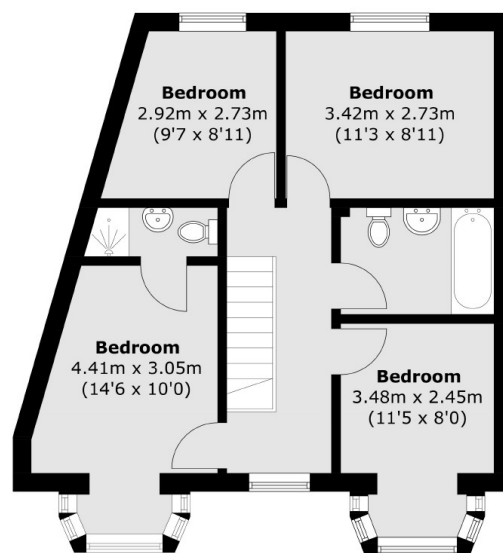
- Four Bedrooms
- Semi-detached
- Chain Free
- Off-Street Parking
- Double Fronted
- Private Garden



Covington Way, London, SW16



Ground Floor



First Floor

Total area (approx.): 121.6 sq. m (1,308.8 sq. ft)