



Covington Way, SW16  
£725,000

**Dexters**



## Covington Way, SW16

This four double bedroom house benefits from a large kitchen/diner, two large reception rooms, a great size garden and sits at just under 1,500 Sq Ft. This property is also being offered to the market chain free.

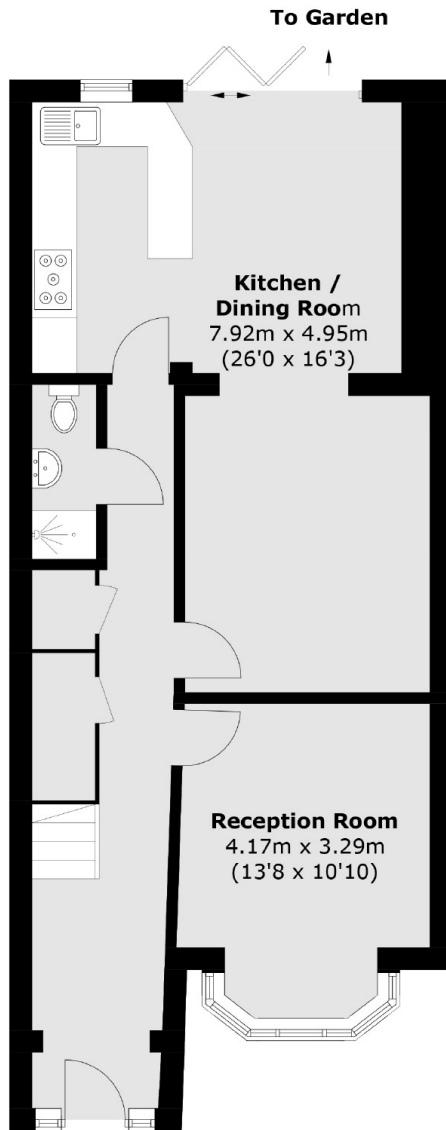
Covington Way is a quiet street surrounding Norwood Grove and the Rookery Gardens. This leafy part of Streatham has plenty of green open spaces to enjoy. You can access both Norbury and Streatham Stations which have access into London Victoria. Streatham High Road offers a great mix of pubs, shops and restaurants.

### Features

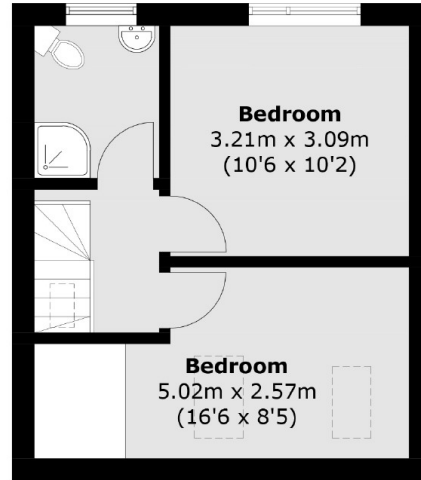
- Recently Renovated
- No Chain
- Four Double Bedrooms
- Over 1,400 Sq Ft
- Two Reception Rooms
- Large Kitchen/Diner



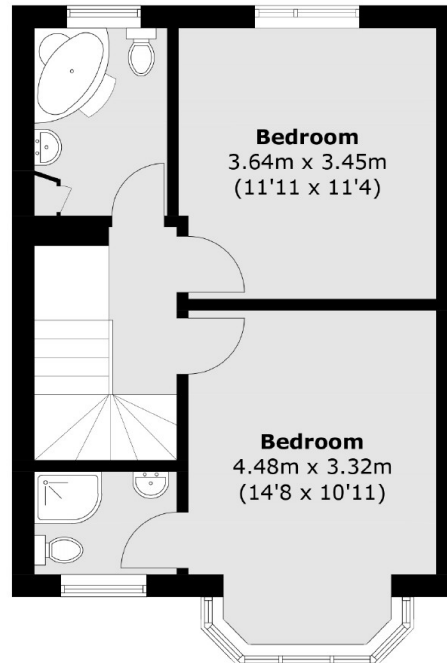
Covington Way,  
London, SW16



**Ground Floor**



**Second Floor**



**First Floor**

Total area (approx.): 135.6 sq. m (1,459.5 sq. ft)