



Palace Road, SW2

£500,000

Dexters



Palace Road, SW2

This fantastic two bedroom flat is the perfect first time buy. It offers a large open plan kitchen/living room. The property is located within a modern development and benefits from a private balcony and communal grounds.

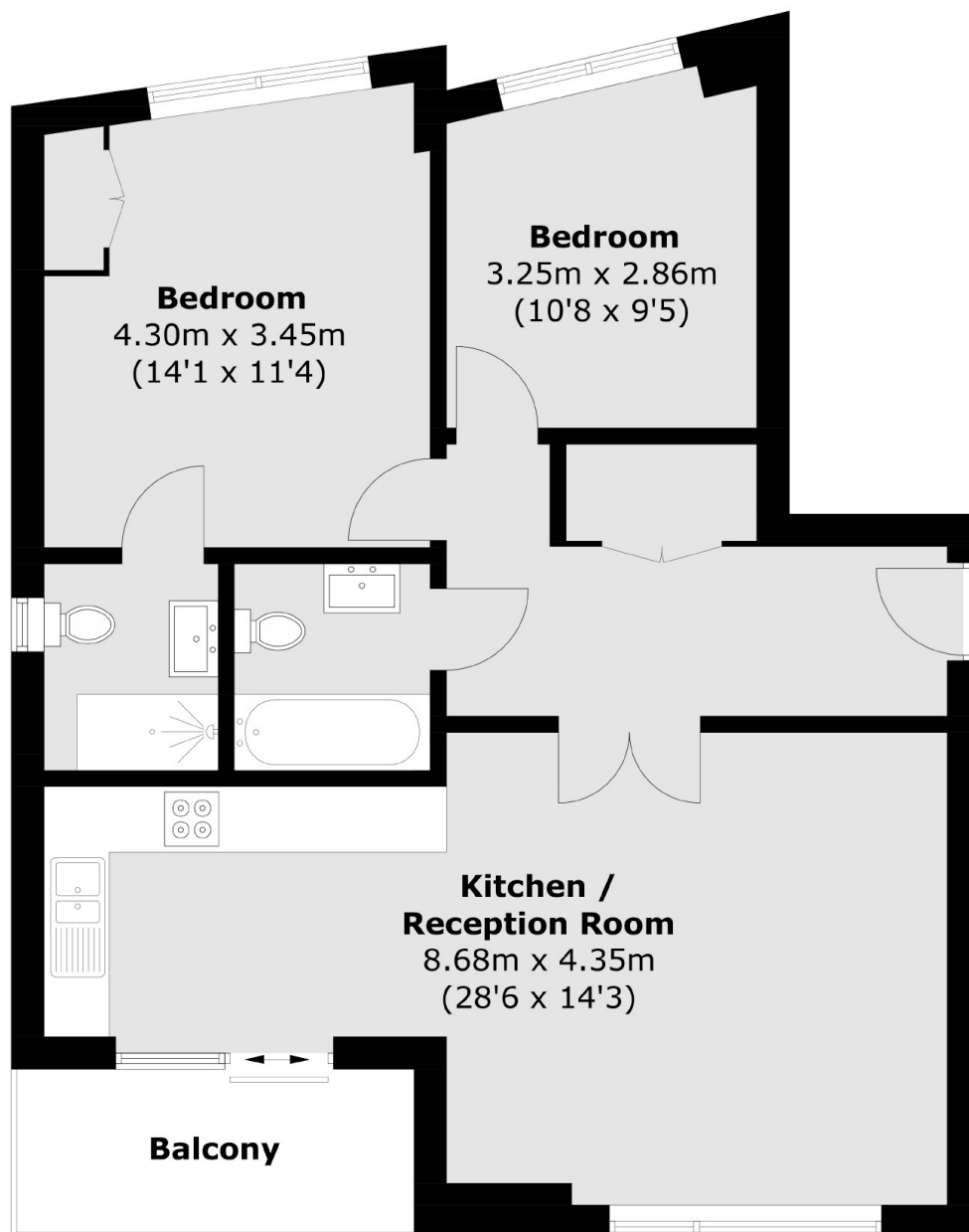
Palace Road is a sought after street moments from Tulse Hill station for rail links serving London Bridge and frequent bus routes to Brixton and Clapham as well as Brixton underground station (Victoria Line). It is also close to Streatham Hill Station which has direct links to Victoria. It is perfectly placed and has a good choice of bars, restaurants and shops along Norwood Road and Streatham Hill.

Features

- Private Balcony
- Off Street Parking
- Two Bedrooms
- Two Bathrooms
- Open Plan Kitchen/Living Room
- Shared Garden



Palace Road, London, SW2



Total area (approx.): 71.9 sq. m (773.9 sq. ft)
Balcony: 5.5 sq. m (59.2 sq. ft)