



Eardley Road, SW16

£3,600 Per calendar month

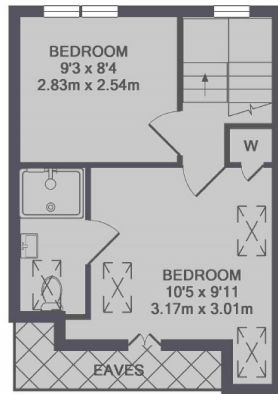
A spacious five bedroom house set over three floors with a separate reception room, dining area and modern kitchen leading on to a private garden. Perfect for four professional sharers.

Situated moments from Streatham Common station offering a quick commute to Balham, Clapham Junction, London Victoria and London Bridge. Also within walking distance of Streatham Common itself as well as the local amenities of Streatham High Road.

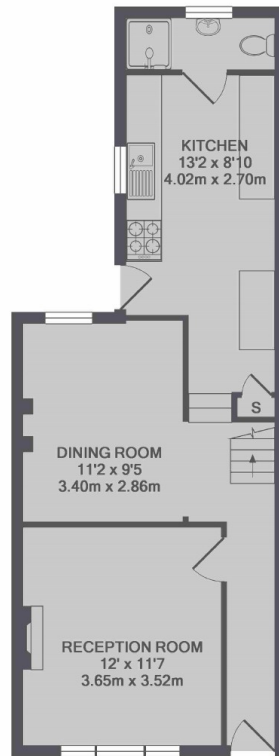
Features

- Four Double Bedrooms
- Additional Study Room
- Great Location
- Large Kitchen
- Three Bathrooms
- Private Garden

Eardley Road, London, SW16



2ND FLOOR



GROUND FLOOR



1ST FLOOR

TOTAL APPROX. FLOOR AREA 1259 SQ.FT. (116.9 SQ.M.)