



Henry Tate Mews, SW16

£515,000

Dexters



Henry Tate Mews, SW16

Located in this secluded, beautifully landscaped development is this charming two bedroom freehold cottage. With separate kitchen to the front of the property and open living space to the rear this property has been reconfigured to create a bright airy feel. This includes a downstairs home office area. Upstairs there are two double bedrooms and family bathroom with a private courtyard garden.

Henry Tate Mews is a private gated development offering plenty of space to enjoy with six acres of land, even including its very own apple orchard, as well as a stone grotto, folly, and Doric temple and lake.

Streatham Common is opposite the development whilst Streatham Station offers links to Victoria Station. There are also easy bus routes to Brixton. There are lots of local amenities that include: great gastro-pubs, a microbrewery and cafe by the beautiful Rookery Gardens on the Common, Streatham's modern Leisure Centre and Ice-Rink and several supermarkets including a 24-hour Tesco super store and M&S Foodhall. Sought after schools are also nearby.

The cottage also has an off street parking bay.

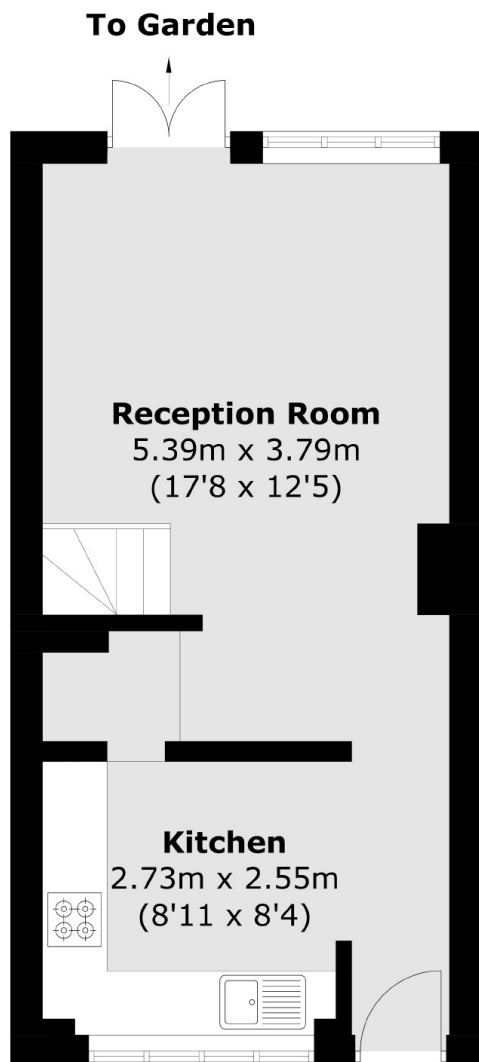
Features

Henry Tate Mews is a private development offering plenty of space to enjoy

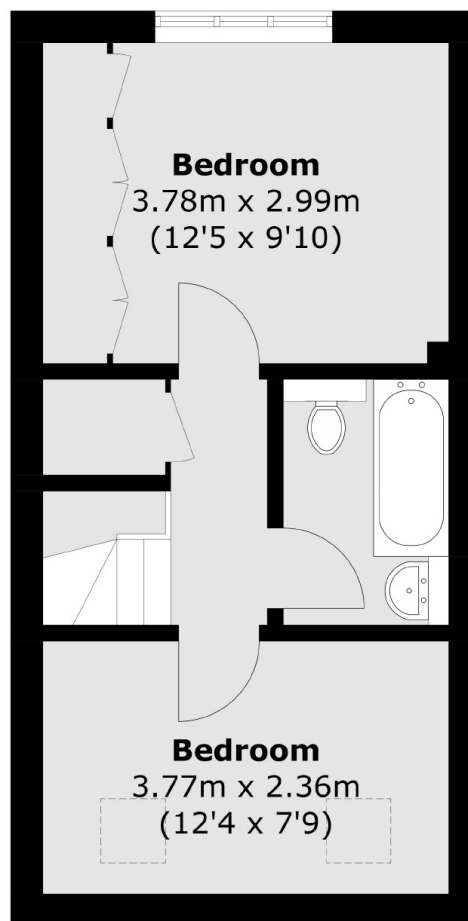
- Freehold House
- Gated Development
- Two Double Bedrooms
- Parking Space
- Communal and Private Gardens
- Good Condition



Henry Tate Mews, London, SW16



Ground Floor



First Floor

Total area (approx.): 61.1 sq. m (657.6 sq. ft)