



Crescent Way, SW16
£1,290,000

Dexters



Crescent Way, SW16

Grand in space and style is this rarely available seven bedroom family home. This property is in immaculate condition and has been refurbished by the current owners. The property is flooded with natural light throughout.

On the ground floor, there is a large front reception room which is linked to the large kitchen/diner with bi-fold doors leading out to a lovely terrace with stairs down to a large south-facing garden making it a great space for entertaining. There is a large outbuilding at the back of the garden which is currently being used as a gym/salon.

On the first floor there are four great size bedrooms and two family bathrooms and ample built in storage throughout. The second floor benefits from a further two bedrooms with another family bathroom.

Crescent Way is a quiet street close to Rookery Gardens and Streatham Common. While located in the more leafier part of Streatham, you still have easy access to both Norbury and Streatham Stations which have trains into London Victoria and London Bridge. Streatham High Road offers a great mix of pubs, shops and restaurants.

Features

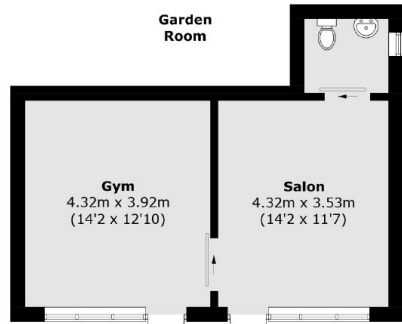
- Semi-Detached
- Off Street Parking
- Over 2,880 Sq Ft
- Immaculate Condition
- Chain Free
- Large Outbuilding



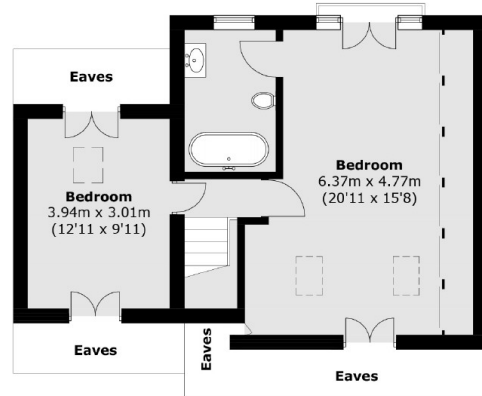




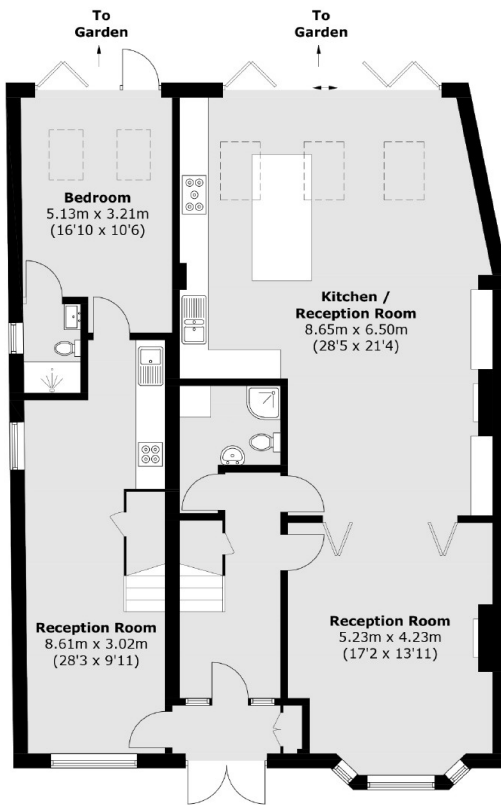
Crescent Way, London, SW16



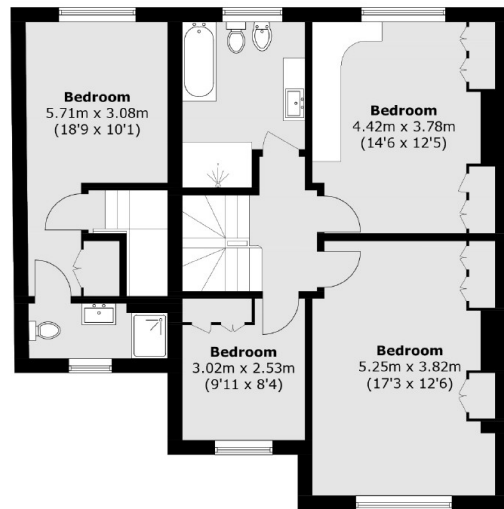
(Not Shown In Actual Location / Orientation)
Ground Floor



Second Floor



Ground Floor



First Floor

Total area (approx.): 268 sq. m (2,884.7 sq. ft)
Garden Room area (approx.): 35.7 sq. m (384.2 sq. ft)
(Excluding Eaves)