



Glencairn Road, SW16

£435,000

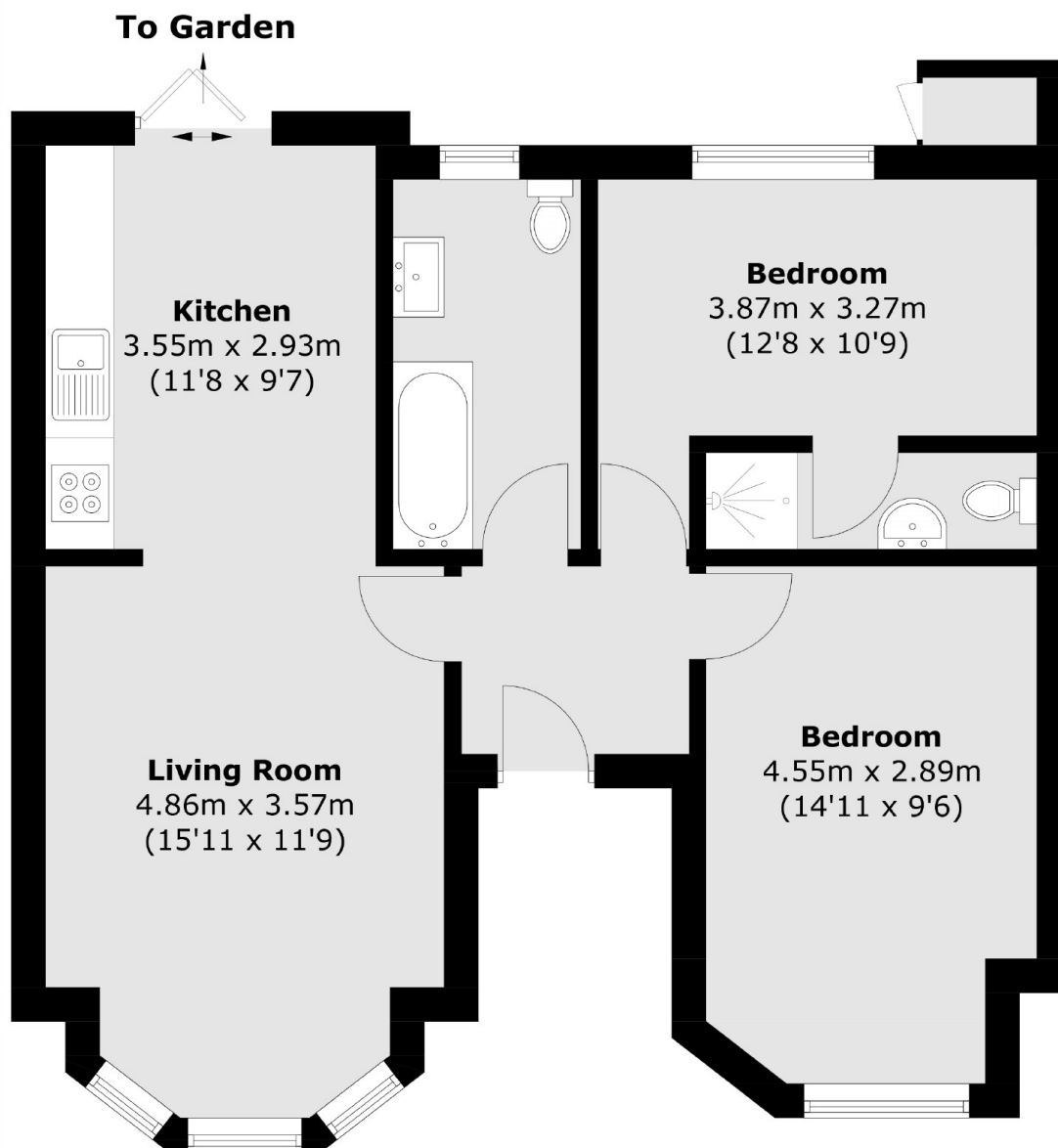
With a bright large double aspect living area, this ground floor flat has a landscaped private garden as well as two double bedrooms and two modern bathrooms. This home has been recently renovated and is being offered to the market with no onward chain.

Glencairn Road is within close proximity to the open spaces of Streatham Common and also offers easy access to Streatham Common mainline station and various bus routes to the city.

Features

- Two Bedrooms
- Two Bathrooms
- Chain Free
- Large Garden
- Double Fronted Flat
- Large Living Space

Glencairn Road, London, SW16



Ground Floor

Total area (approx.): 62.5 sq. m (672.7 sq. ft)
External Cupboard (approx.): 0.6 sq. m (6.4 sq. ft)