



## Glencairn Road, SW16

£475,000

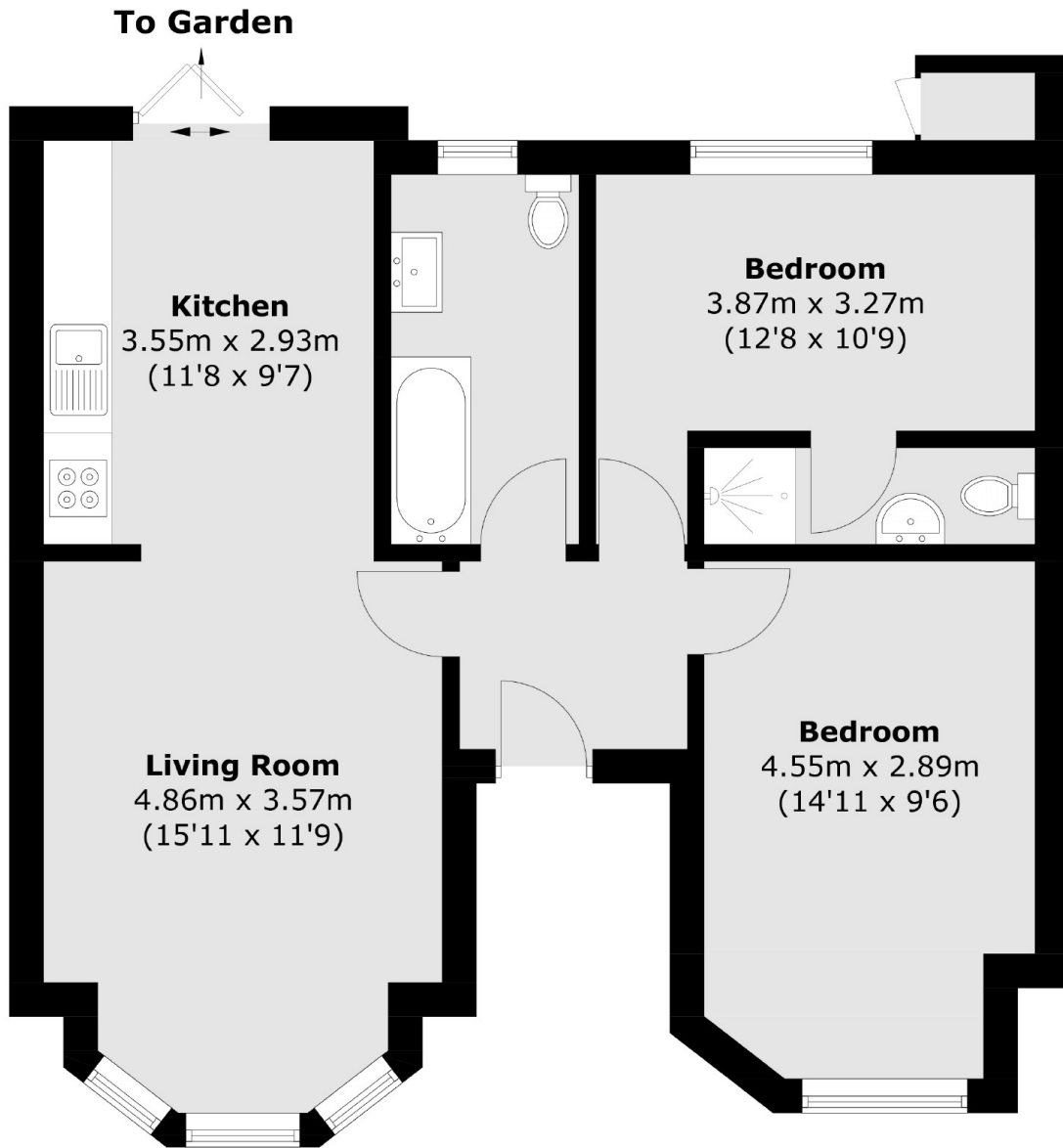
With a bright large double aspect living area, this ground floor flat has a landscaped private garden as well as two double bedrooms and two modern bathrooms. This home has been recently renovated and is being offered to the market with no onward chain.

Glencairn Road is within close proximity to the open spaces of Streatham Common and also offers easy access to Streatham Common mainline station and various bus routes to the city.

### Features

- Two Bedrooms
- Two Bathrooms
- Chain Free
- Large Garden
- Double Fronted Flat
- Large Living Space

Glencairn Road,  
London, SW16



## Ground Floor

Total area (approx.): 62.5 sq. m (672.7 sq. ft)  
External Cupboard (approx.): 0.6 sq. m (6.4 sq. ft)

**Dexters**

Streatham  
105 Streatham Hill  
London  
SW2 4UG  
Sales  
020 8674 7400

Energy Rating: D. We aim to make our particulars both accurate and reliable. However they are not guaranteed; nor do they form part of an offer or contract. If you require clarification on any points then please contact us, especially if you're traveling some distance to view. Please note that appliances and heating systems have not been tested and therefore no warranties can be given as to their good working order.

 **RICS** | Regulated  
Estate Agent  
and Letting Agent

dexters.co.uk